



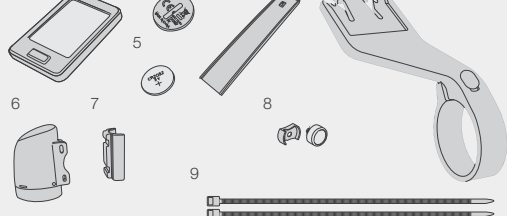
About this Manual

This is the manual for the RIDEtime Computer.
Check for updates at bontrager.com.

RIDEtime

PN566367

Parts list



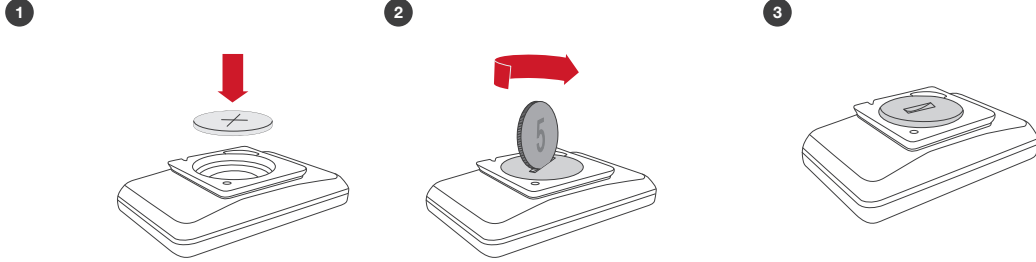
1. Computer 2. Battery cover 3. 31.8mm handlebar shim
4. Out front mount 5. CR2032 battery 6. Speed sensor
7. Mounting shim 8. Speed magnet (wheel) 9. Zip ties
Tools needed for assembly: 2.5mm Hex wrench, pliers, scissors.



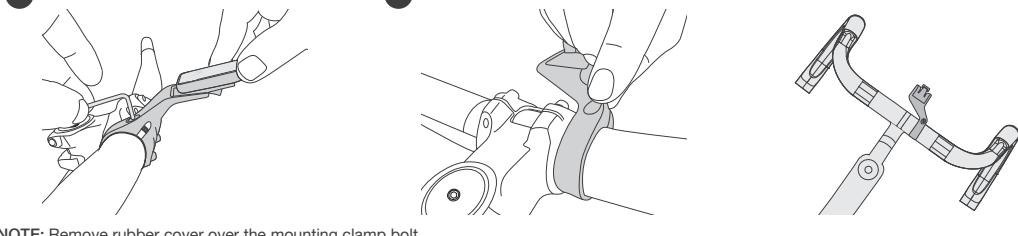
Safety

When riding your bicycle, do not stare at the computer for a long time. If you do not watch the road, you could hit an obstacle, which might cause you to lose control and fall.

Battery Installation



Mount computer



NOTE: Remove rubber cover over the mounting clamp bolt.

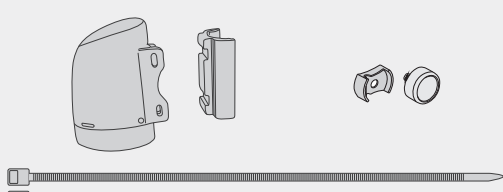
31.8mm handlebar mounting

Use 2.5mm hex wrench.
0.8 N-m (7 in-lb) recommended torque.
NOTE: The mount can be reversed to position computer over the stem. Mount not to be used with phones.

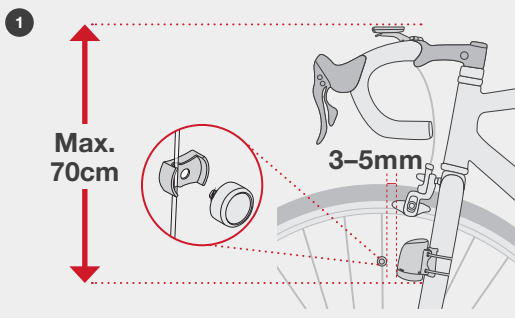
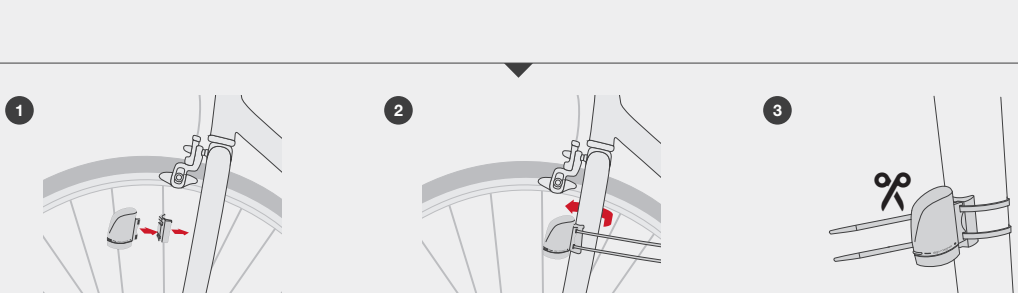
For 35mm handlebar mounting remove the shim.



Mount speed sensor



NOTE: Sensor uses A23 12V battery.



Understanding the instructions

Button location	Quick press	Multi press	Long press (2 seconds)
Front	▲	▲▲	▲▲▲
Rear	▶		▶▶

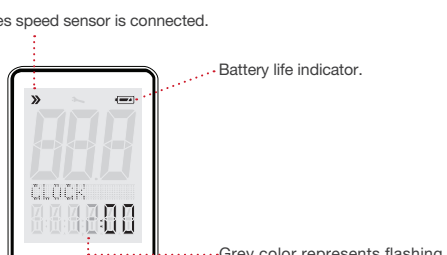
▲ The letters indicate the order in which to push the buttons.

▲▲ More than one arrow means you should push the button until you see the value you want.

▲▲▲ Press and hold until next digit flashes to switch to next digit or field.

Selection note

Indicates speed sensor is connected.



Grey color represents flashing characters that show selected value.

