

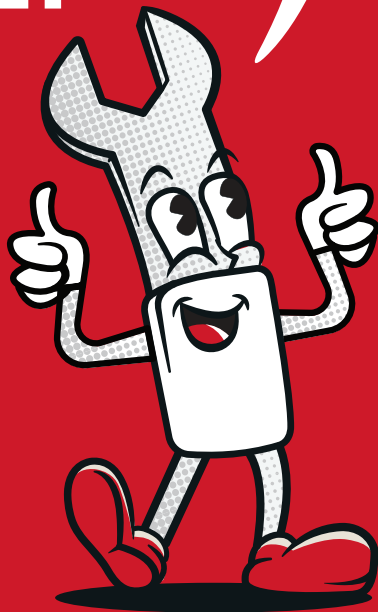
ROAD & E-BIKES

QUICK ASSEMBLY GUIDE

You got this!

FPO German

FPO Dutch



TREK

⚠ WARNING: Failure to follow the assembly instructions outlined in this guide could lead to an accident, which could cause serious injury or death.

❗ IMPORTANT: This assembly guide is not a replacement for the Trek Owner's Manual or other instructions required for your bicycle. The Trek Owner's Manual contains essential safety information that you must read and understand before riding your new bike. The manual is included in the box and can also be found at trekbikes.com/manuals.

⚠ WARNING: You add to the risk of injury if you use your bicycle in an incorrect manner. Misuse can add stress to the bike and cause the frame or components to break. To decrease your risk of injury, use the bicycle in the manner for which it was designed (see the "Use conditions & weight limits" section in the Trek Owner's Manual).

▶ To see the guide and watch the assembly video, use this QR code:
trekbikes.com/how-to-assemble-bike > Road bikes



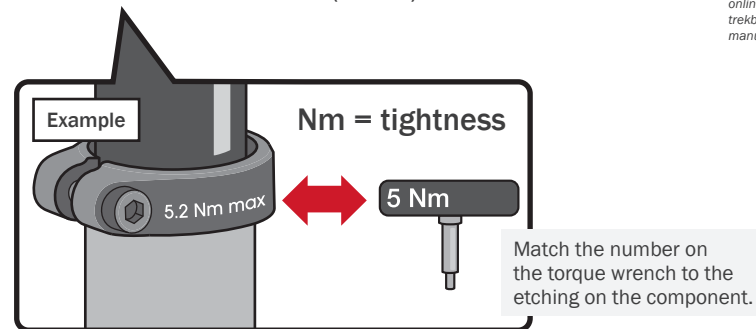
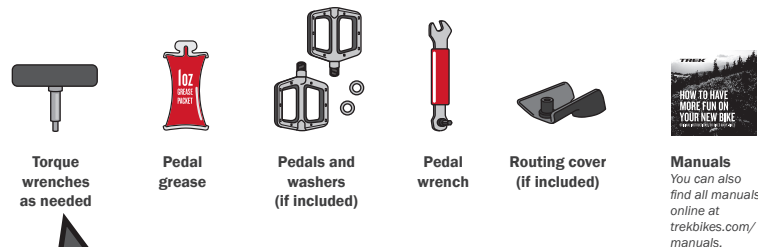
❗ If you are unsure about the final assembly, take your bike to a Trek retailer for an assembly inspection before riding.

⚠ WARNING: Use only hardware supplied by Trek to complete the assembly of the bicycle.



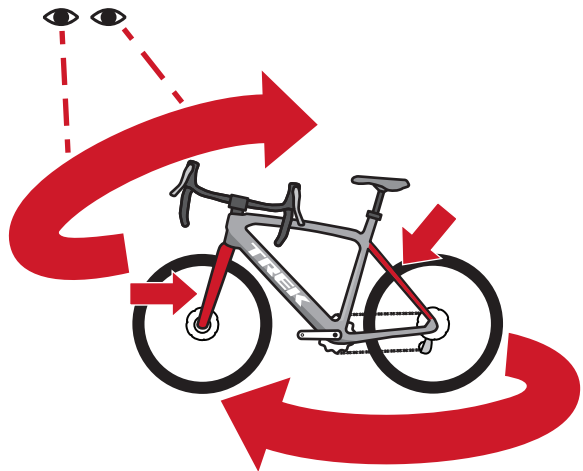
Remove the tools from the tool box.

Parts and tools will vary based on bike model.
Not all tools are provided (such as a tire pump).



2

Take the bike out of the box and remove the packaging. Check the bike for shipping damage and make sure all parts are included. Pay special attention to the fork legs and the seat stays (both inside and outside surfaces).



If you notice damage or you're unsure about the initial inspection of your bike, contact Trek Customer Care at UK: 01908 360140, Netherlands/Belgium: 088 4500 699, Germany/Austria: 00800 8735 8735.

Do you need to install the handlebar?



Yes

Go to **3**

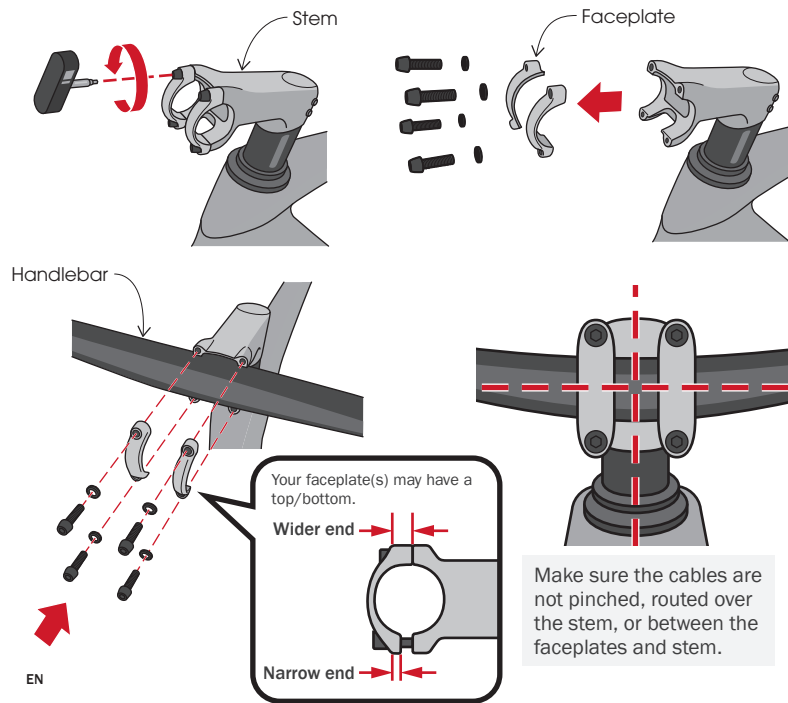


No

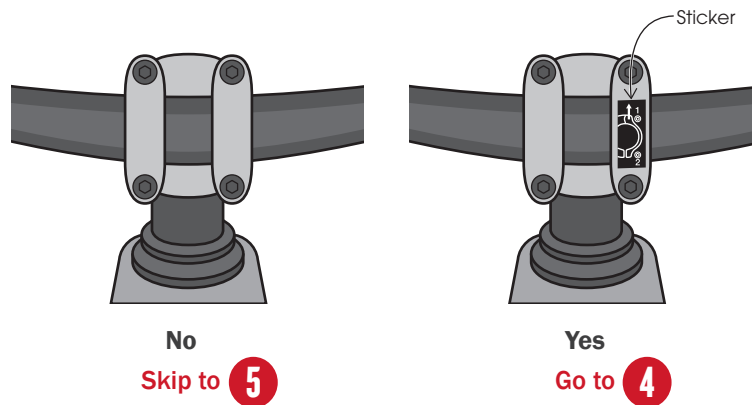
Skip to **7**

3

Attach and align the handlebar. Do not fully tighten the bolts (there is a specific tightening order).

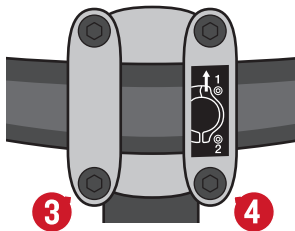
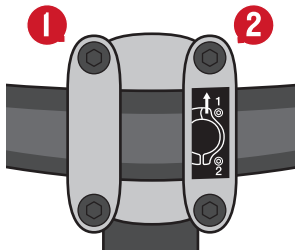


Is there a sticker on the faceplate?

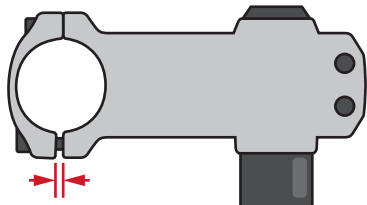


4

Tighten the top two faceplate bolts one half turn at a time — switching back and forth — until you hear the tool click. Then tighten the bottom two.



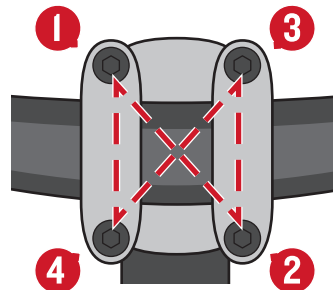
Make sure the top is touching and there is a gap on the bottom. If there is a gap at the top, loosen the bolts and retighten them following the order above.



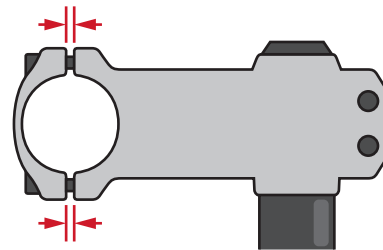
Skip to **6**

5

Tighten the faceplate bolts one half turn at a time — in an X pattern — until you feel the tool click.



Make sure the gap is equal on the top and bottom. If the spacing is unequal, loosen the bolts and retighten them following the order above.



6

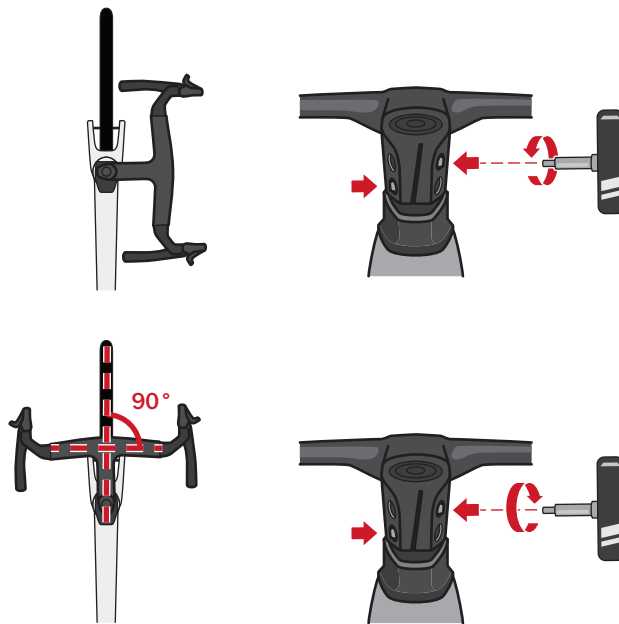
Verify the handlebar is level with the floor.



Skip to **8**

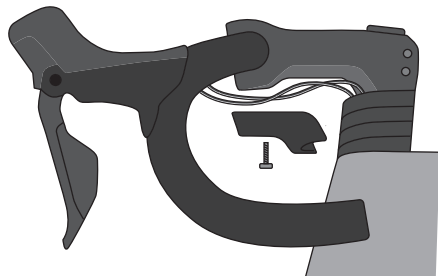
7

If handlebar was attached in box: Loosen the stem bolts, align the handlebar stem, and retighten the stem bolts — switching side-to-side — until you feel the tool click.



8

Do you have a cable cover?



Yes

Go to

9

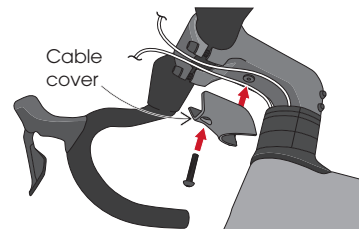
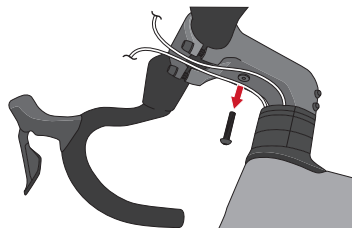
No

Skip to

10

9

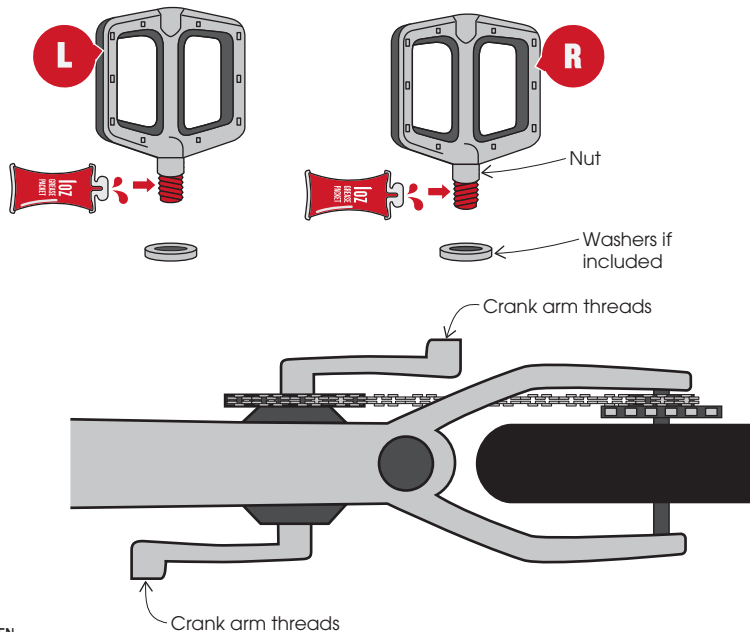
If there is a cable cover included, remove the bolt under the stem and install the cable cover over the cables. Tighten the bolt until it's snug.



Make sure the cables are inside the cable cover.

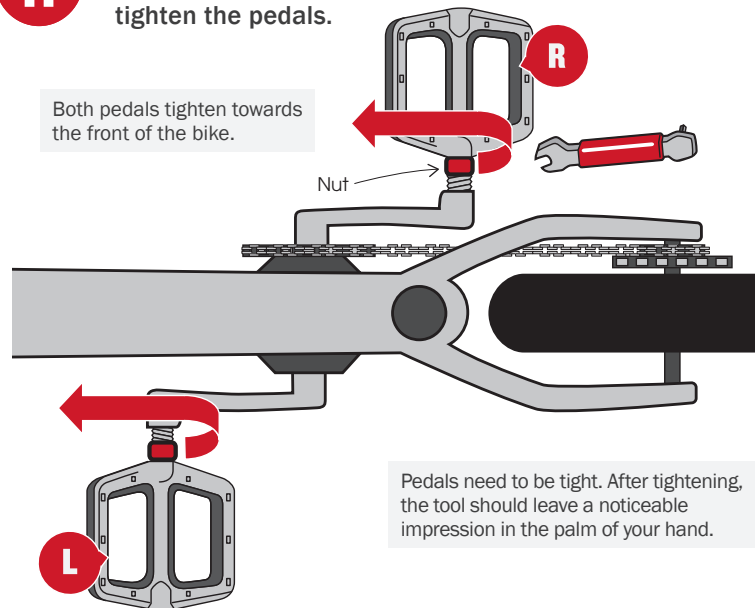
10

Install the pedals. Grease the pedal threads and clean the crank arm threads (there may be residue from the packaging strap). If included, install the washers over the pedal threads first.



11

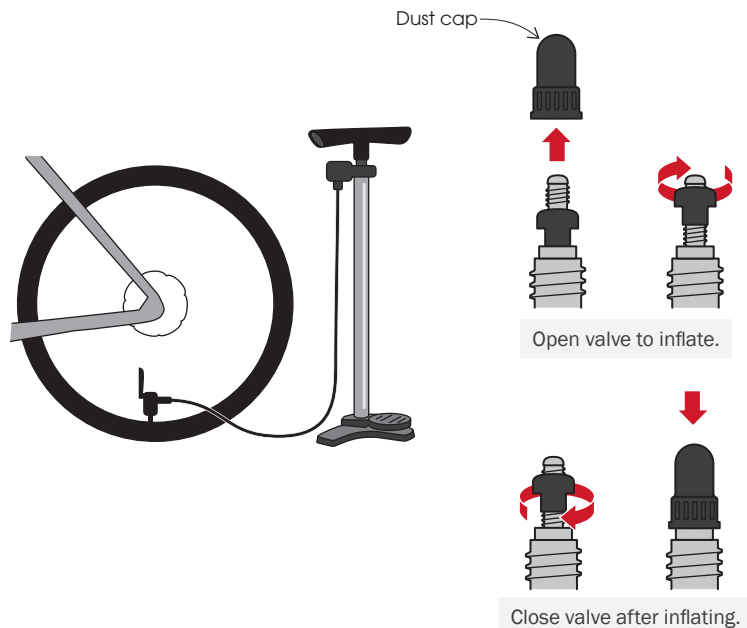
Thread the pedals in by hand — tightening by the nut, not the pedal. Then use the pedal wrench to fully tighten the pedals.



WARNING: The chainring has sharp points. Be careful when working around the chainring. Failure to do so may result in cut or pinched skin.

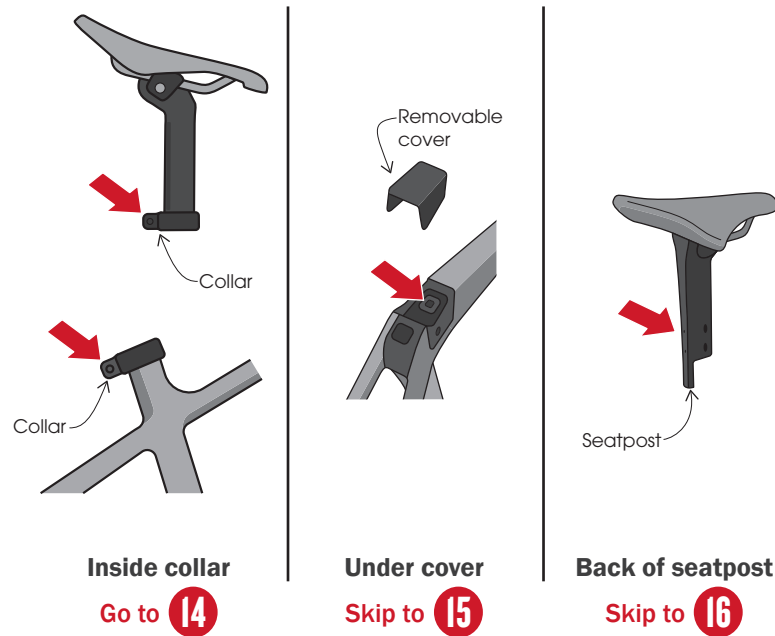
12

Inflate to the pressure range on the tire or the rim, whichever is lowest. If you have a question, contact Trek Customer Care or your local dealer.



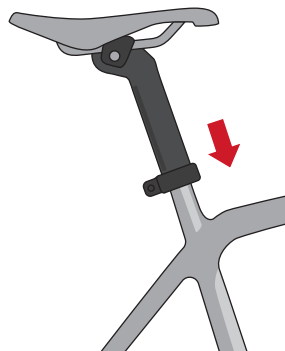
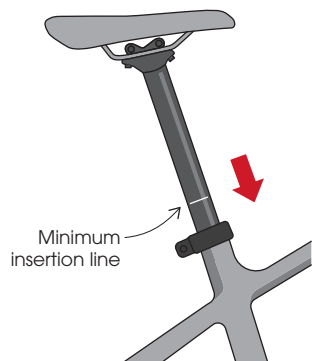
13

Where is the bolt that secures the seatpost?



14

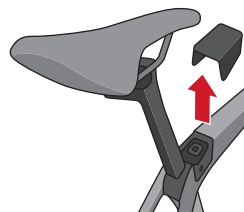
Adjust the seat height to your riding preference.
Tighten the clamp bolt.



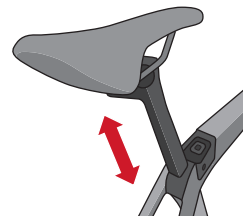
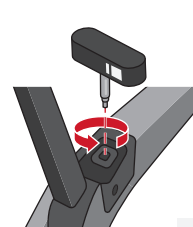
Skip to **17**

15

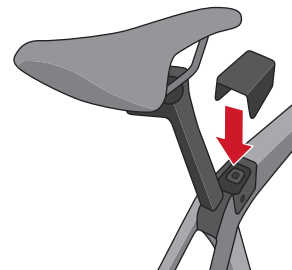
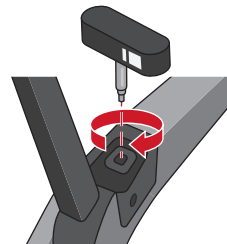
Remove the wedge cover or flip open the cover. Loosen the bolt. Adjust the seat height and tighten the bolt. Put the cover back on.



Gently pull one side of the wedge cover to remove it.



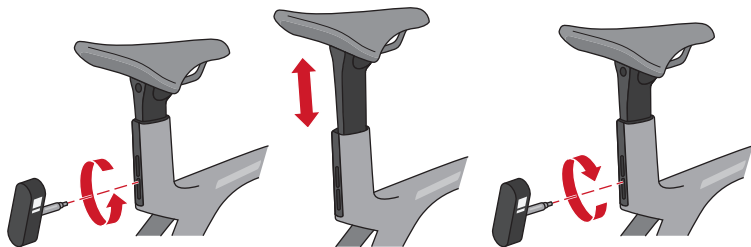
Do not lower the seatpost all the way down to the stop point. There must be at least a 5 mm gap between the bottom of the seatpost and the stop point.



Skip to **17**

16

Loosen the bolt. Adjust the seat height and tighten the bolt.



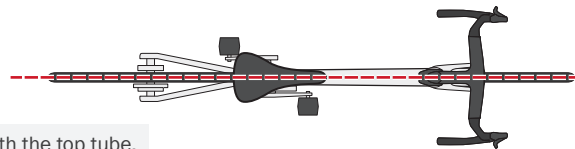
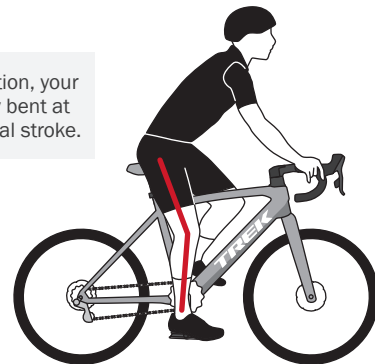
For more detailed information, see the service manual on [Trekbikes.com](https://www.trekbikes.com) > click on your bike > Service > Service manual.

17

Adjust the seat height to your riding preference. Raise or lower the seatpost as needed and tighten the bolt.

Dropper post only — adjust the saddle height with the dropper fully extended.

In a normal riding position, your knee should be slightly bent at the bottom of your pedal stroke.



Align the seat with the top tube.

BICYCLE ASSEMBLY CHECKLIST

Before and after your first ride, complete this checklist:

- ☐ Handlebar/stem combo properly installed? (Steps 3-6)
- ☐ Handlebar aligned and bolts properly tightened? (Step 7)
- ☐ Pedals installed correctly and tightened? (Steps 10-11)
- ☐ Tires properly inflated? (Step 12)
- ☐ Seatpost installed correctly? (Steps 13-17)
- ☐ Read the Trek Owner's Manual (included with your bike).
- ☐ Register your bicycle.
- ☐ Perform a pre-ride check.



Watch the Pre-Ride Check video on the Trek Bicycle YouTube channel.



Register your bike at trekbikes.com/productRegistration/

For more detailed information, see the service manual on [Trebikes.com](https://trekbikes.com) > click on your bike > Service > Service manual.

WARRANTY: For information about your bike's warranty, please see trekbikes.com/inside_trek/warrantied_for_life.



QUESTIONS? Please contact your local Trek bike shop, call Trek Customer Care at UK: 01908 360140, Netherlands/Belgium: 088 4500 699, Germany/Austria: 00800 8735 8735 from 9am – 5:30pm Monday – Friday, or chat with us at trekbikes.com/contactus.



**RIDE BIKES
HAVE FUN
FEEL GOOD**

TREK