

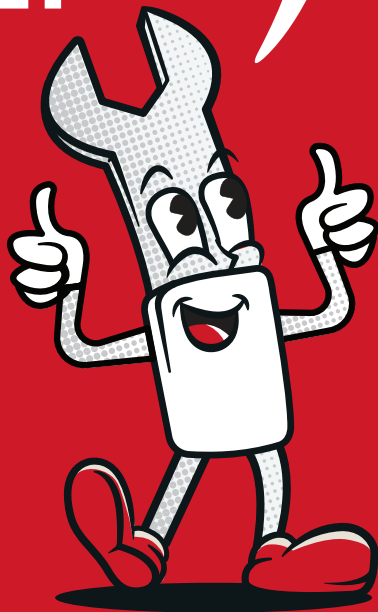
MOUNTAIN & E-BIKES

QUICK ASSEMBLY GUIDE

You got this!

FPO German

FPO Dutch



TREK

⚠ WARNING: Failure to follow the assembly instructions outlined in this guide could lead to an accident, which could cause serious injury or death.

❗ IMPORTANT: This assembly guide is not a replacement for the Trek Owner's Manual or other instructions required for your bicycle. The Trek Owner's Manual contains essential safety information that you must read and understand before riding your new bike. The manual is included in the box and can also be found at trekbikes.com/manuals.

⚠ WARNING: You add to the risk of injury if you use your bicycle in an incorrect manner. Misuse can add stress to the bike and cause the frame or components to break. To decrease your risk of injury, use the bicycle in the manner for which it was designed (see the "Use conditions & weight limits" section in the Trek Owner's Manual).

▶ To see the guide and watch the assembly video, use this QR code:
trekbikes.com/how-to-assemble-bike > Mountain bikes



❗ If you are unsure about the final assembly, take your bike to a Trek retailer for an assembly inspection before riding.

⚠ WARNING: Use only hardware supplied by Trek to complete the assembly of the bicycle.



Remove the tools from the tool box.

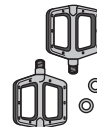
Parts and tools will vary based on bike model.
Not all tools are provided (such as a tire pump).



Torque wrenches as needed



Pedal grease



Pedals and washers (if included)



Pedal wrench

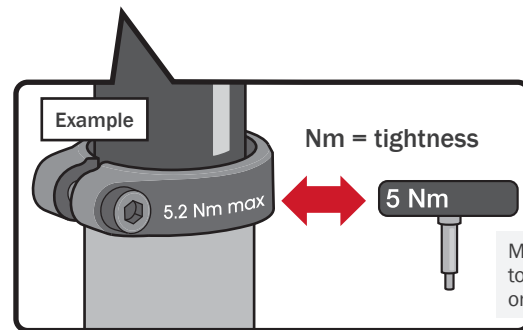


Shock pump



Manuals

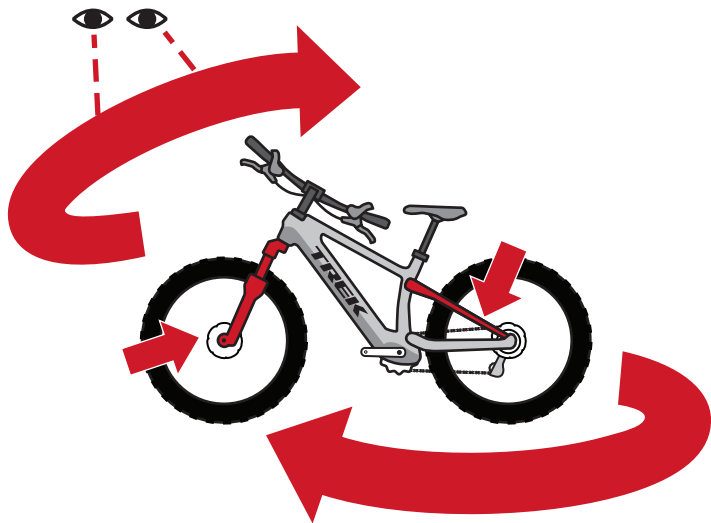
You can also find the manuals online at trekbikes.com/manuals.



Match the number on the torque wrench to the etching on the component.

2

Take the bike out of the box and remove all packaging. Check the bike for shipping damage and make sure all parts are included. Pay special attention to the fork legs and the seat stays (both inside and outside surfaces).



If you notice damage or you're unsure about the initial inspection of your bike, contact Trek Customer Care at UK: 01908 360140, Netherlands/Belgium: 088 4500 699, Germany/Austria: 00800 8735 8735.

Is the bike a Session?



No
Skip to **4**

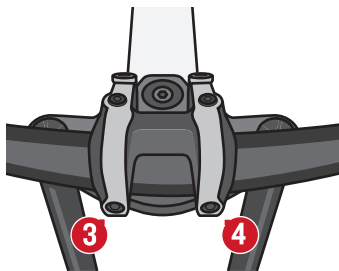
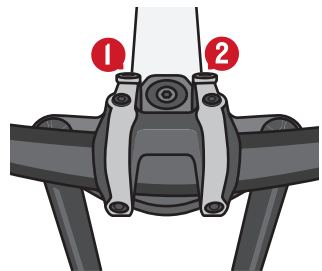
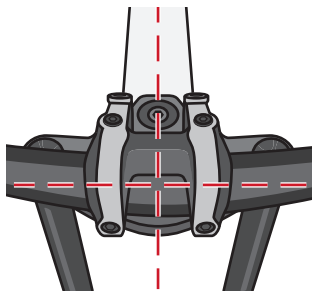
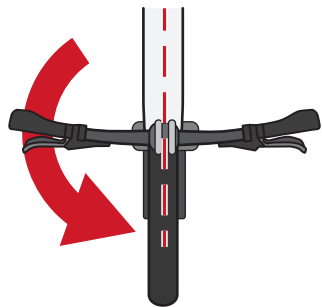


Yes
Go to **3**

3

Session only (downhill bike).

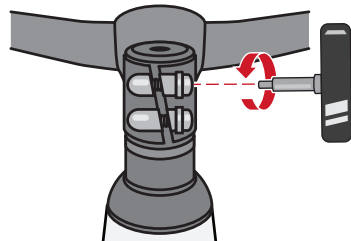
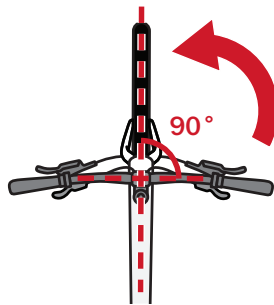
Rotate and align the handlebar. Tighten the rear two faceplate bolts one half turn at a time — switching back and forth — until the tool clicks. Then fully tighten the front two.



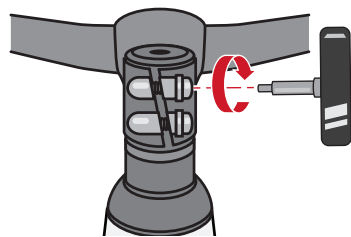
Skip to **5**

4

If handlebar was attached in box: Loosen the stem bolts, align the handlebar stem, and retighten the stem bolts — switching side-to-side — until you feel the tool click.

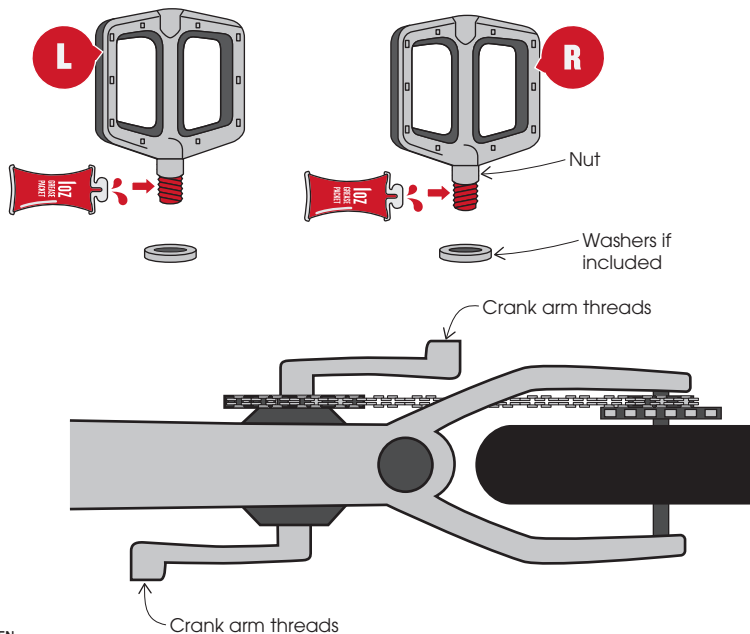


Stem bolt positions vary by model.



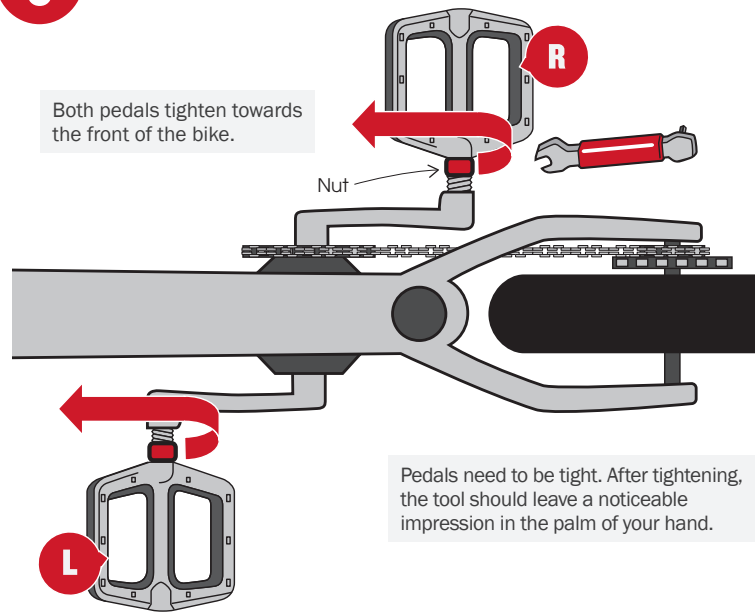
5

Install the pedals. Grease the pedal threads and clean the crank arm threads (there may be residue from the packaging strap). If included, install the washers over the pedal threads first.



6

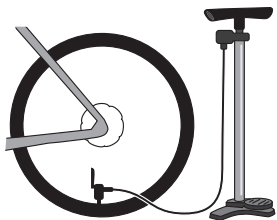
Thread the pedals in by hand — tightening by the nut, not the pedal. Then use the pedal wrench to fully tighten the pedals.



WARNING: The chainring has sharp points. Be careful when working around the chainring. Failure to do so may result in cut or pinched skin.

7

Inflate both tires — do not exceed the maximum tire pressure listed on the rim or tire. Recommended tire pressures are listed along with your suspension setup in the online Suspension Calculator (scan QR code below).



To take full advantage of the performance characteristics of your bike, adjust tire pressure based on expected riding conditions.



Suspension Calculator

Schrader



Presta



Open valve to inflate.



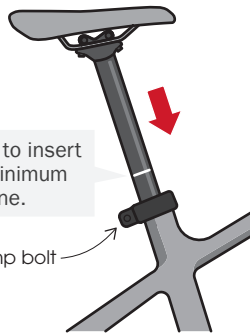
Close valve after inflating.



8

Adjust the seat height to your riding preference. Tighten the clamp bolt.

If you have a dropper post, adjust the saddle height with the dropper fully extended.



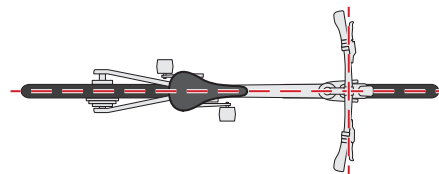
Make sure to insert past the minimum insertion line.

Clamp bolt



In a normal riding position, your knee should be slightly bent at the bottom of your pedal stroke.

Align the seat with the top tube.



9

Go to the online Suspension Calculator and determine your suggested suspension settings. Then apply your suspension settings.

Mountain bikes require a small amount of set up for the individual rider. Adjusting these settings will optimize your suspension performance.

How to use a shock pump

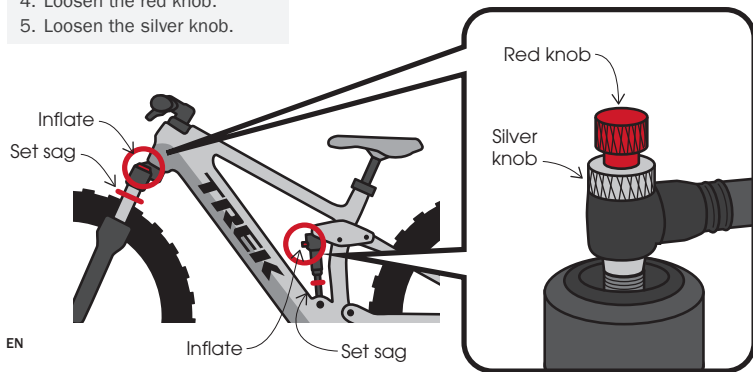
1. Tighten the silver knob.
2. Tighten the red knob.
3. Inflate the suspension based on your settings determined above.
4. Loosen the red knob.
5. Loosen the silver knob.



Suspension Calculator



How to set up your suspension



EN

BICYCLE ASSEMBLY CHECKLIST

Before and after your first ride, complete this checklist:

- ☐ Handlebar/stem combo properly installed? (Step 4)
- ☐ Pedals installed correctly and tightened? (Steps 5 and 6)
- ☐ Tires inflated? (Step 7)
- ☐ Seat height adjusted? (Steps 8)
- ☐ Read the Trek Owner's Manual (included with your bike).
- ☐ Register your bicycle.
- ☐ Perform a pre-ride check.



Watch the Pre-Ride Check video on the Trek Bicycle YouTube channel.



Register your bike at trekbikes.com/productRegistration/

For more detailed information, see the service manual on [Trebikes.com](https://trekbikes.com) > click on your bike > Service > Service manual.

EN

WARRANTY: For information about your bike's warranty, please see trekbikes.com/inside_trek/warrantied_for_life.



QUESTIONS? Please contact your local Trek bike shop, call Trek Customer Care at UK: 01908 360140, Netherlands/Belgium: 088 4500 699, Germany/Austria: 00800 8735 8735 from 9am – 5:30pm Monday – Friday, or chat with us at trekbikes.com/contactus.



**RIDE BIKES
HAVE FUN
FEEL GOOD**

TREK