

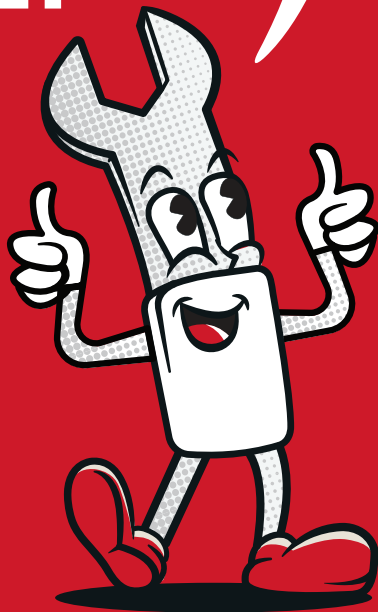
CITY & E-BIKES

QUICK ASSEMBLY GUIDE

You got this!

FPO German

FPO Dutch



TREK

⚠ WARNING: Failure to follow the assembly instructions outlined in this guide could lead to an accident, which could cause serious injury or death.

❗ IMPORTANT: This assembly guide is not a replacement for the Trek Owner's Manual or other instructions required for your bicycle. The Trek Owner's Manual contains essential safety information that you must read and understand before riding your new bike. The manual is included in the box and can also be found at trekbikes.com/manuals.

⚠ WARNING: You add to the risk of injury if you use your bicycle in an incorrect manner. Misuse can add stress to the bike and cause the frame or components to break. To decrease your risk of injury, use the bicycle in the manner for which it was designed (see the "Use conditions & weight limits" section in the Trek Owner's Manual).

▶ To see the guide and watch the assembly video, use this QR code:
trekbikes.com/how-to-assemble-bike > City bikes



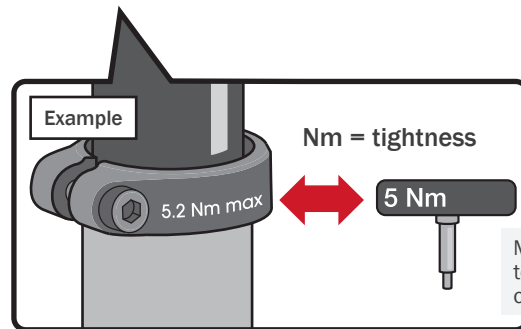
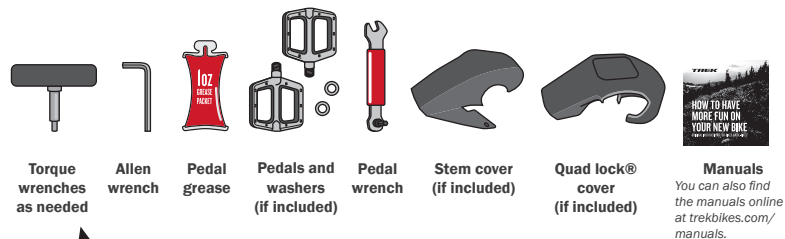
❗ If you are unsure about the final assembly, take your bike to a Trek retailer for an assembly inspection before riding.

⚠ WARNING: Use only hardware supplied by Trek to complete the assembly of the bicycle.



Remove the tools from the tool box.

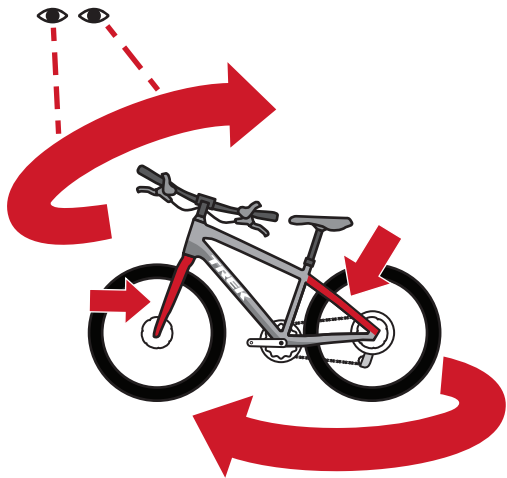
Parts and tools will vary based on bike model.
Not all tools are provided (such as a tire pump).



Match the number on the torque wrench to the etching on the component.

2

Take the bike out of the box and remove the cardboard around the fork. Check the bike for shipping damage and make sure all parts are included. Pay special attention to the fork legs and the seat stays (both inside and outside surfaces).



If you notice damage or you're unsure about the initial inspection of your bike, contact Trek Customer Care at UK: 01908 360140, Netherlands/Belgium: 088 4500 699, Germany/Austria: 00800 8735 8735.

Is the handlebar installed?



Yes

Skip to step **5**

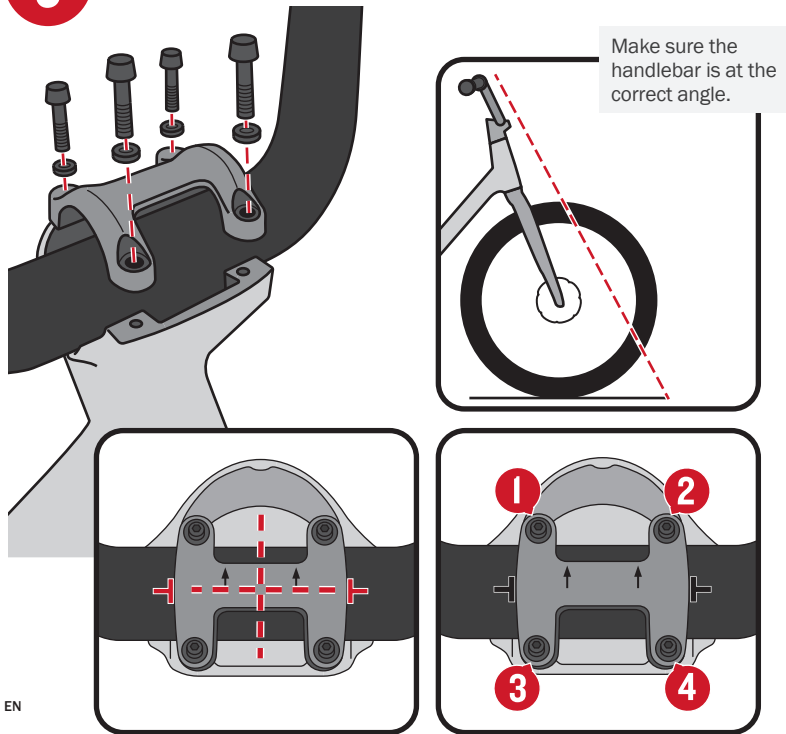


No

Go to step **3**

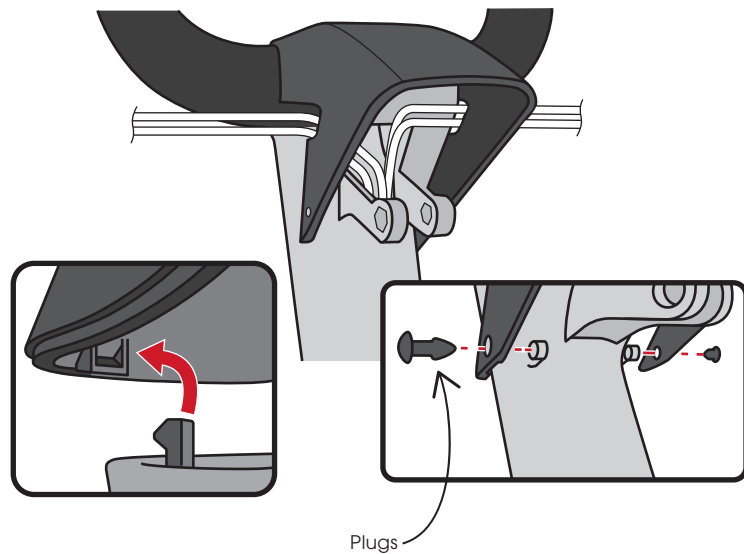
3

Install the handlebar. Use the marks on the faceplate and handlebar to align. Tighten the back two fasteners first.



4

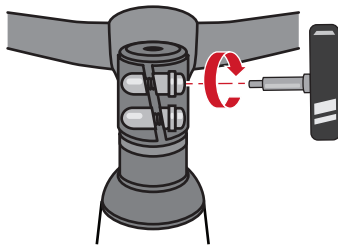
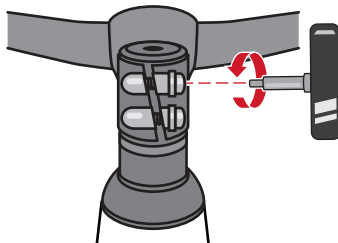
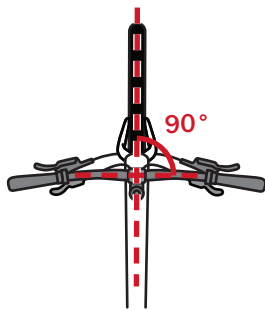
Install the stem cover. The cables go through the holes on the side. Use the plugs to secure it.



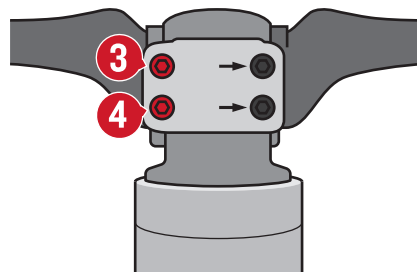
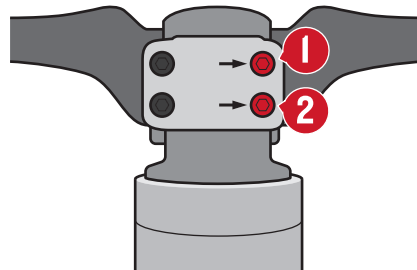
Skip to step **7**

5

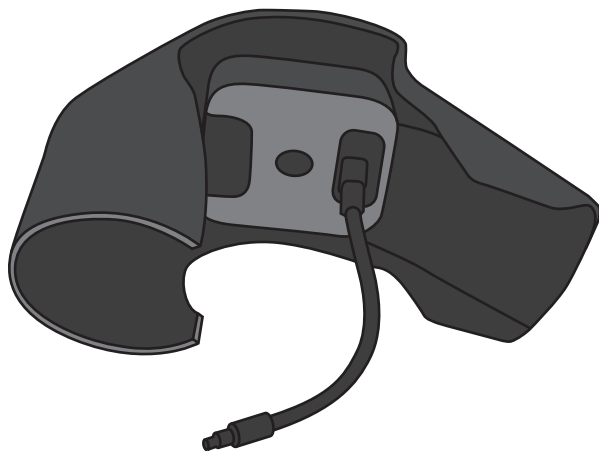
If handlebar was attached in box: Loosen the stem bolts, align the handlebar stem, and retighten the stem bolts — switching side-to-side — until you feel the tool click.



If the stem bolts look like this (see below), fully tighten the fasteners on the drive side of the barstem — switching between them — until they are fully torqued. Then fully tighten the fasteners on the non-drive side of the barstem — switching between them — until they are fully torqued.



Do you have a Quad Lock®?



Yes

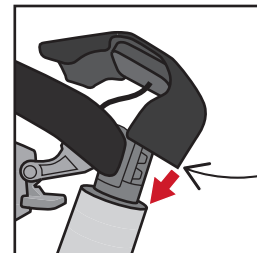
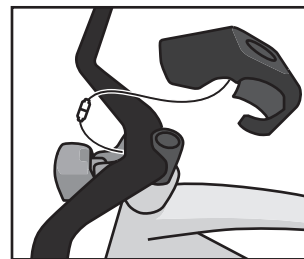
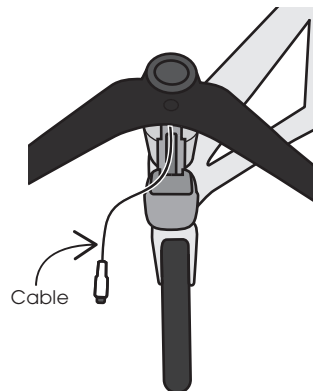
Go to step **6**

No

Skip to step **7**

6

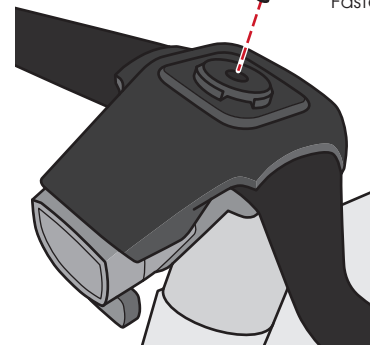
Connect the cable. Put the Quad Lock® on—starting with the rear notch—then the front notches. Make sure the light is properly aligned and tighten the fastener.



Rear notch



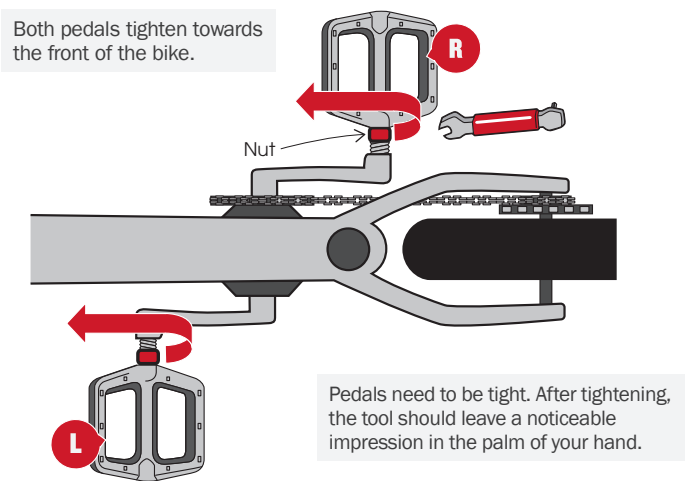
Fastener



Install the pedals. Grease the pedal threads and clean the crank arm threads (there may be residue from the packaging strap). If included, install the washers over the pedal threads first.



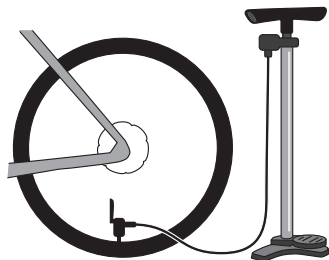
Thread the pedals in by hand — tightening by the nut, not the pedal. Then use the pedal wrench to fully tighten the pedals.



⚠ WARNING: The chainring has sharp points. Be careful when working around the chainring. Failure to do so may result in cut or pinched skin.

9

Inflate both tires to within the pressure range listed on the tire.



Schrader



Presta



Open valve to inflate.



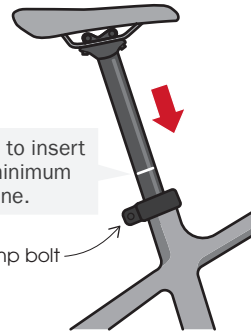
Close valve after inflating.



EN

10

Adjust the seat height to your riding preference. Raise or lower the seatpost as needed and tighten the bolt.



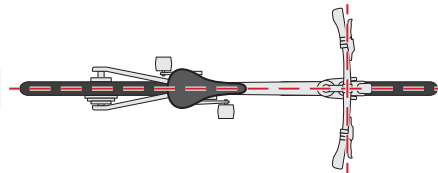
Make sure to insert past the minimum insertion line.

Clamp bolt



In a normal riding position, your knee should be slightly bent at the bottom of your pedal stroke.

Align the seat with the top tube.



EN

BICYCLE ASSEMBLY CHECKLIST

Before and after your first ride, complete this checklist:

- ☐ Handlebar and stem properly installed and/or aligned? (Steps 3-4 or 5-6)
- ☐ Pedals installed correctly and tightened? (Steps 7-8)
- ☐ Tires inflated to correct pressure? (Step 9)
- ☐ Seat height correct? (Step 10)
- ☐ Read the Trek Owner's Manual (included with your bike).
- ☐ Register your bicycle.
- ☐ Perform a pre-ride check.



Watch the Pre-Ride Check video on the Trek Bicycle YouTube channel.



Register your bike at trekbikes.com/productRegistration/

For more detailed information, see the service manual on [Trebikes.com](https://trekbikes.com) > click on your bike > Service > Service manual.

WARRANTY: For information about your bike's warranty, please see trekbikes.com/inside_trek/warrantied_for_life.



QUESTIONS? Please contact your local Trek bike shop, call Trek Customer Care at UK: 01908 360140, Netherlands/Belgium: 088 4500 699, Germany/Austria: 00800 8735 8735 from 9am – 5:30pm Monday – Friday, or chat with us at trekbikes.com/contactus.



**RIDE BIKES
HAVE FUN
FEEL GOOD**

TREK