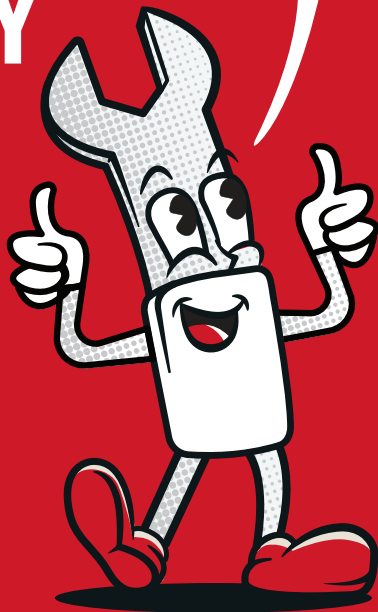


CITY & E-BIKES

QUICK ASSEMBLY GUIDE

You got this!



TREK

⚠ WARNING: Failure to follow the assembly instructions outlined in this guide could lead to an accident, which could cause serious injury or death.

❗ IMPORTANT: This assembly guide is not a replacement for the Trek Owner's Manual or other instructions required for your bicycle. The Trek Owner's Manual contains essential safety information that you must read and understand before riding your new bike. The manual is included in the box and can also be found at trekbikes.com/manuals.

⚠ WARNING: You add to the risk of injury if you use your bicycle in an incorrect manner. Misuse can add stress to the bike and cause the frame or components to break. To decrease your risk of injury, use the bicycle in the manner for which it was designed (see the "Use conditions & weight limits" section in the Trek Owner's Manual).

▶ To see the guide and watch the assembly video, use this QR code:
trekbikes.com/how-to-assemble-bike > City bikes



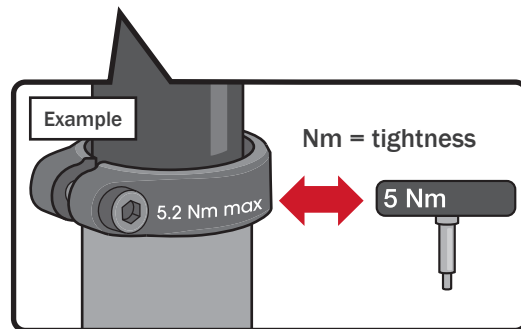
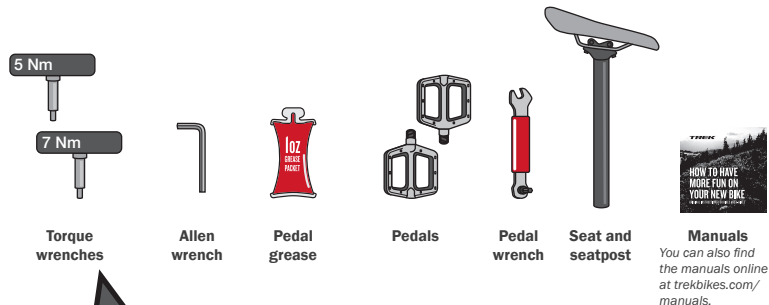
❗ If you are unsure about the final assembly, take your bike to a Trek retailer for an assembly inspection before riding.

⚠ WARNING: Use only hardware supplied by Trek to complete the assembly of the bicycle.



Remove the tools from the tool box.

Parts and tools will vary based on bike model. Not all tools are provided (such as a tire pump).

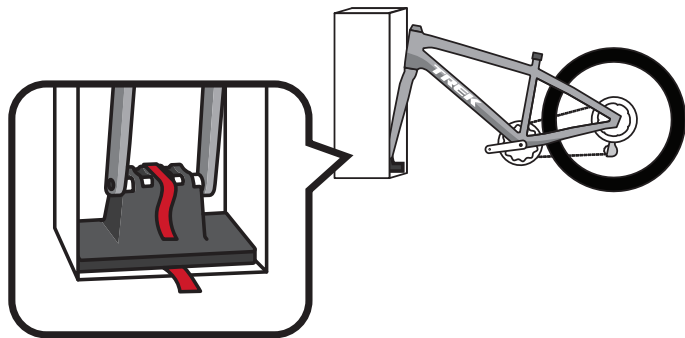


Match the number on the torque wrench to the etching on the component.

2

Take the bike out of the box and remove the cardboard around the fork.

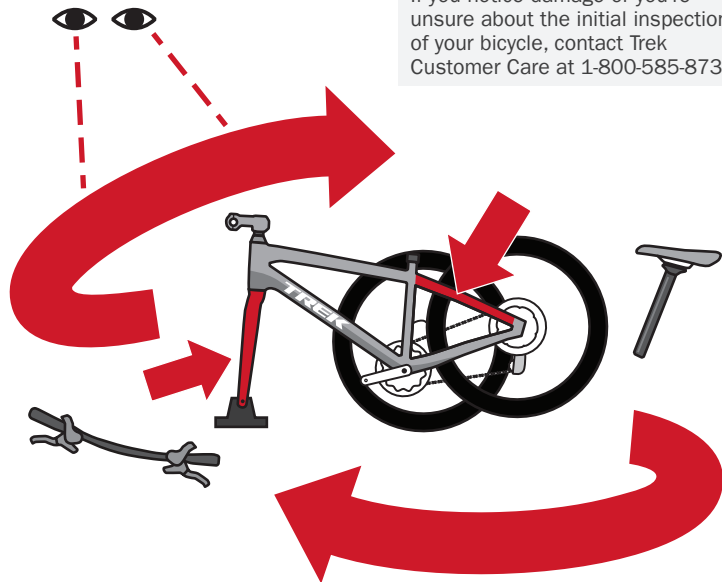
For e-bikes, make sure your e-system is off before assembly.



3

Check the bike for shipping damage and make sure all parts are included. Pay special attention to the fork legs and the seat stays (both inside and outside surfaces).

If you notice damage or you're unsure about the initial inspection of your bicycle, contact Trek Customer Care at 1-800-585-8735.



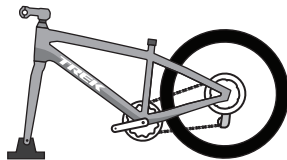
4

Is the handlebar installed?



Yes

Go to step 5

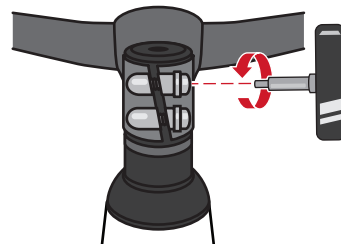
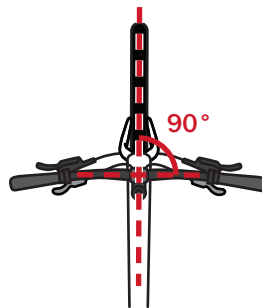
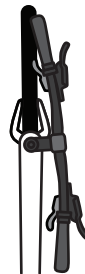


No

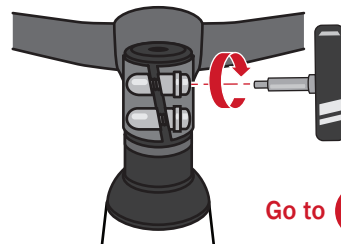
Go to step 6

5

Loosen the stem bolts and rotate the handlebar so it's aligned with the front wheel. Then tighten the stem bolts one half turn at a time — switching between them — until you feel the tool click.



Stem bolt positions vary by model.

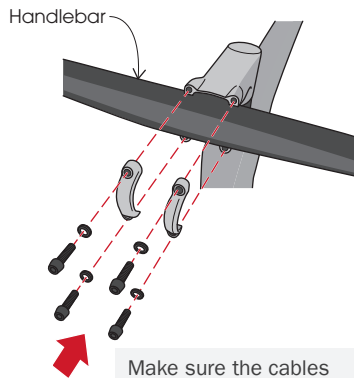
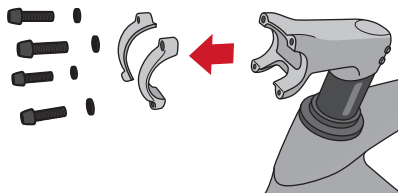
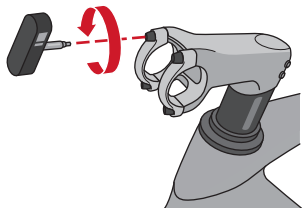


Go to 15

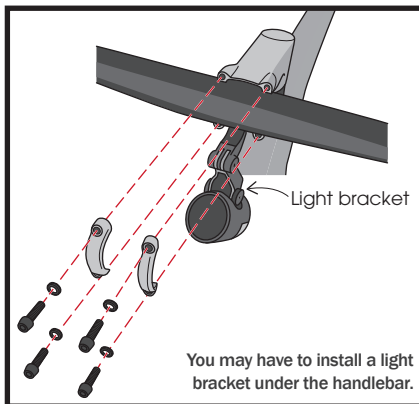
6

Attach and align the handlebar. Do not fully tighten the bolts (you will adjust the handlebar and tighten the bolts later).

It's okay to let the handlebar hang by the cables for a short time.



Make sure the cables are not pinched, routed over the stem, or between the faceplates and stem.

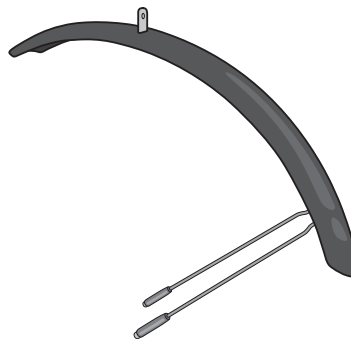


You may have to install a light bracket under the handlebar.

EN

7

Do you need to install the front fender?



Yes

Go to **8**

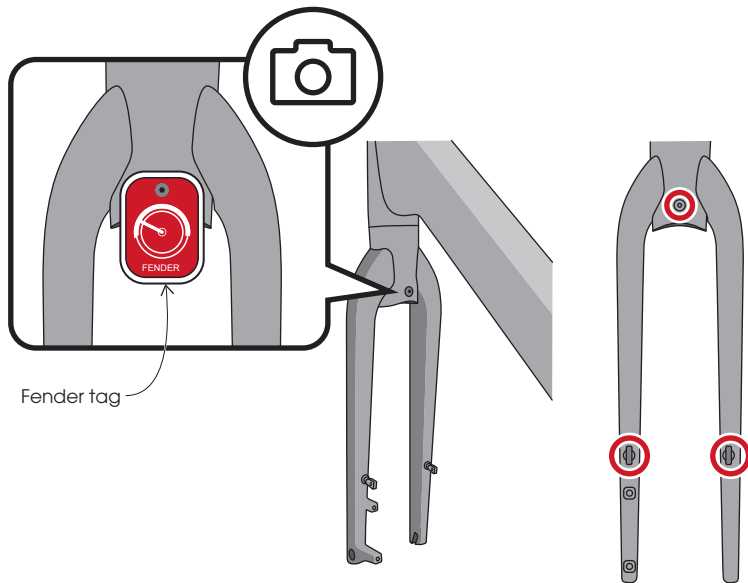
No

Go to **10**

EN

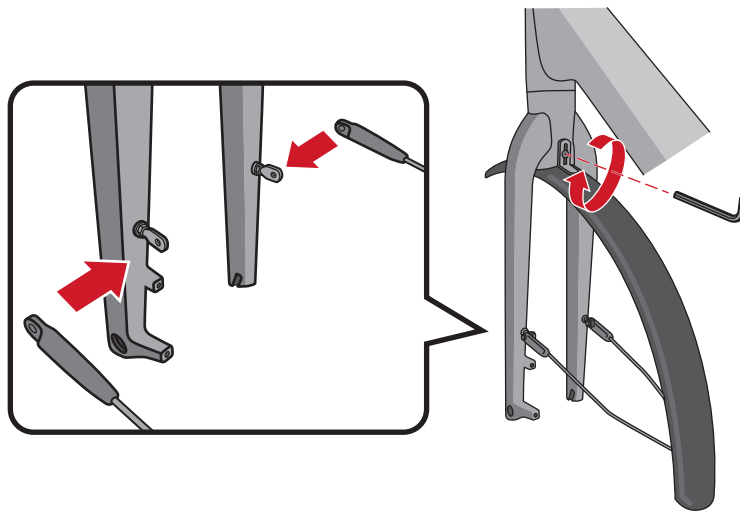
8

Before removing the fender hardware, take a picture to help you remember how to reassemble (the fender connections will replace the fender tags).

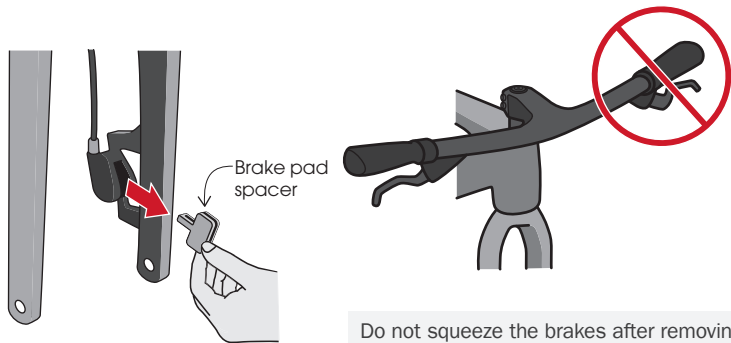
**9**

Attach the fender connections in place of the tag locations. Fully tighten all bolts.

⚠ WARNING: Only use Trek hardware. Install the fender using all of the fasteners supplied with your bike and in the same position. Do not use alternate/unauthorized fasteners.



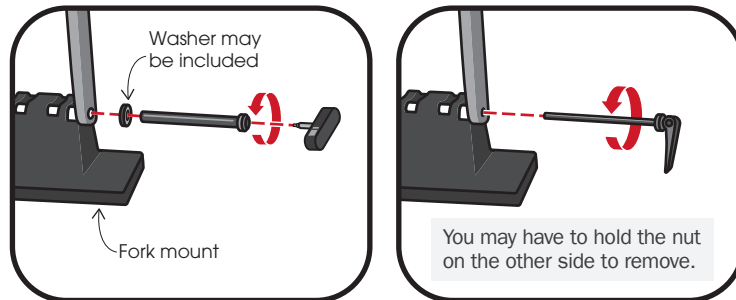
10 Remove the brake pad spacer.



Do not squeeze the brakes after removing the pad spacer. This can close the brake pads and make it difficult to reopen them.

11 Remove the axle from the fork mount and remove the fork mount (remember which side you removed the axle from).

You may need to lean the bike against a wall for stability.



Did a nut come loose?

Nut



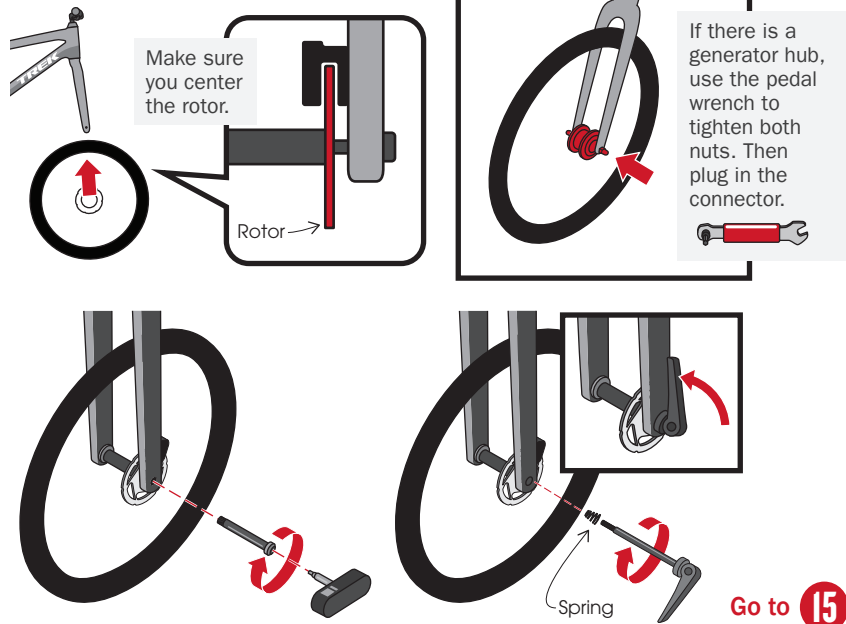
Yes
Skip to **13**



No
Go to **12**

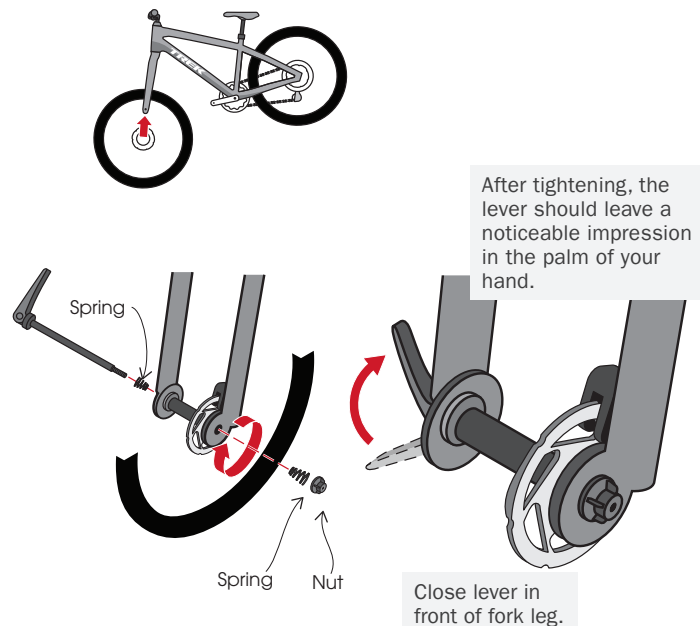
12

Grab the front wheel, lift the bike, and insert the front wheel. Install the axle and tighten until you feel the tool click or the lever leaves a noticeable impression in the palm of your hand.



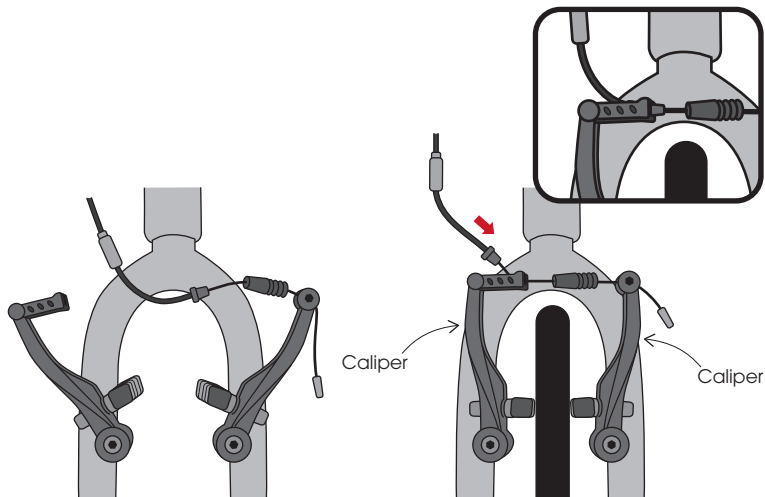
13

Grab the front wheel, lift the bike, and insert the front wheel. Then install the skewer axle. Hold the lever at about 5 o'clock and tighten the nut until you feel resistance. Then close the lever with your palm.



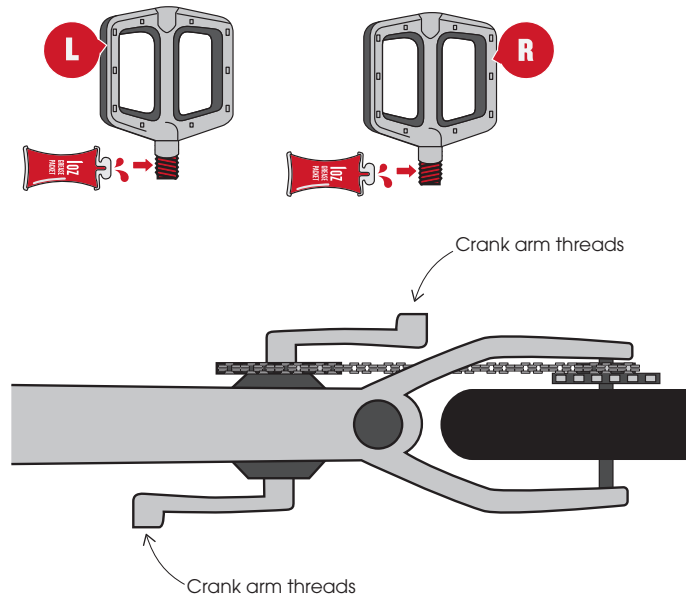
14

Rim brakes only — squeeze the brake calipers with your hands and connect the front brake cable.



15

Grease the pedal threads and clean the crank arm threads (there may be residue from the packaging strap).

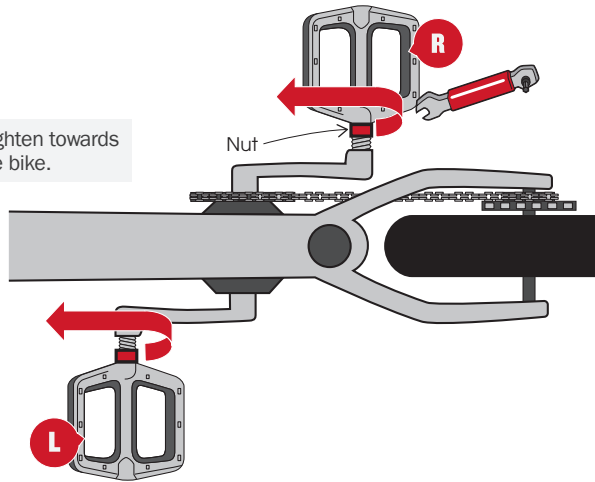


16

Thread the pedals in by hand — tightening by the nut, not the pedal. Then use the pedal wrench to fully tighten the pedals.

After tightening, the tool should leave a noticeable impression in the palm of your hand.

Both pedals tighten towards the front of the bike.

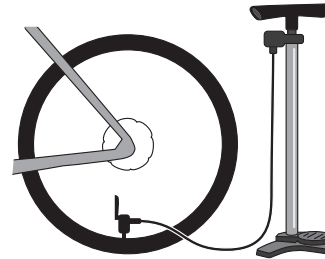


⚠ WARNING: The chainring has sharp points. Be careful when working around the chainring. Failure to do so may result in cut or pinched skin.

EN

17

Inflate both tires to within the pressure range listed on the tire.



Schrader



Presta



Open valve to inflate.

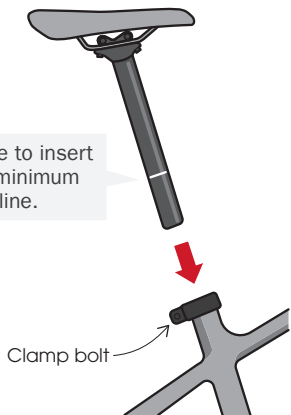
Close valve after inflating.

EN

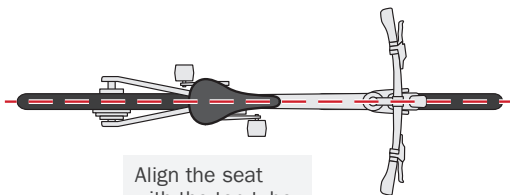
18

Insert the seatpost and adjust the seat height to your riding preference. Then tighten the clamp bolt or quick release lever.

Make sure to insert past the minimum insertion line.



In a normal riding position, your knee should be slightly bent at the bottom of your pedal stroke.

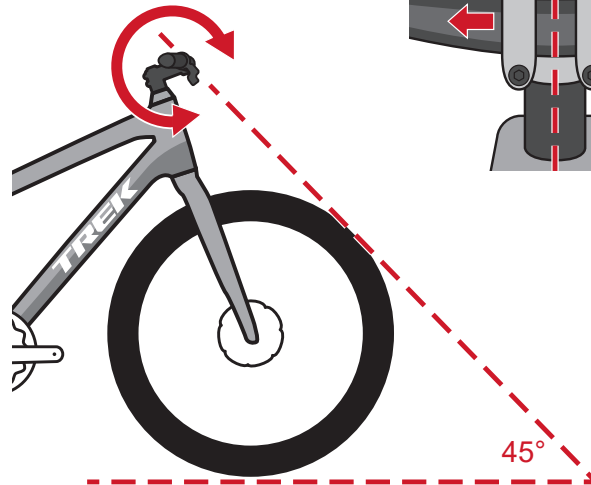


Align the seat with the top tube.

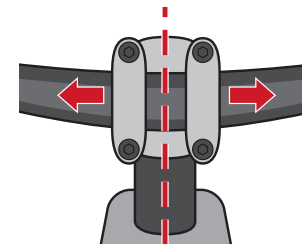
19

Now that the front wheel is on, align the handlebar (you may need to loosen the faceplate bolts).

Adjust the handlebar so the levers are about 45° to the ground.



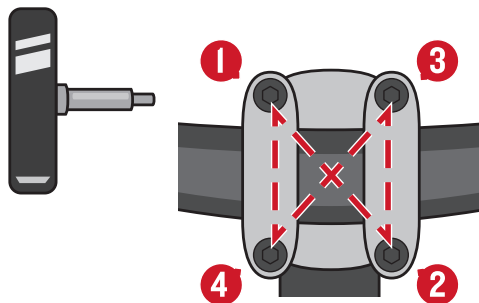
Center the handlebar between faceplates.



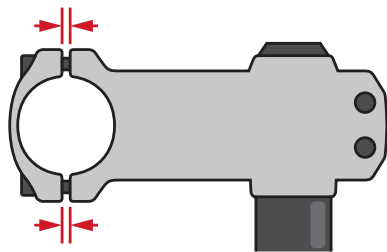
45°

20

Tighten the faceplate bolts one half turn at a time — in an X pattern — until you hear the tool click.



Make sure the gap is equal on the top and bottom. If the spacing is unequal, loosen the bolts and retighten them following the order above.



BICYCLE ASSEMBLY CHECKLIST

Before and after your first ride, complete this checklist:

- Front fender installed correctly: if applicable? *(Steps 9-10)*
- Front wheel installed correctly? *(Steps 12-13)*
- Pedals installed correctly and tightened? *(Steps 15-16)*
- Tires inflated to correct pressure? *(Step 17)*
- Seatpost installed and seat height correct? *(Step 18)*
- Handlebar and stem properly aligned? *(Step 19)*
- Faceplate bolts properly tightened? *(Step 20)*
- Read the Trek Owner's Manual (included with your bike).
- Register your bicycle.
- Perform a pre-ride check.

For more detailed information, see the service manual on Trekbikes.com > click on your bike > Service > Service manual.



Register your bike at trekbikes.com/productRegistration/



Watch the Pre-Ride Check video on the Trek Bicycle YouTube channel.

RIDE BIKES HAVE FUN FEEL GOOD

WARRANTY: For information about your bike's warranty, please see trekbikes.com/inside_trek/warrantied_for_life.



QUESTIONS? Please contact your local Trek bike shop, call Trek Customer Care at 800-585-8735 from 9am – 5:30pm Monday – Friday CST, or chat with us at trekbikes.com/contactus.



TREK

PN 5327032