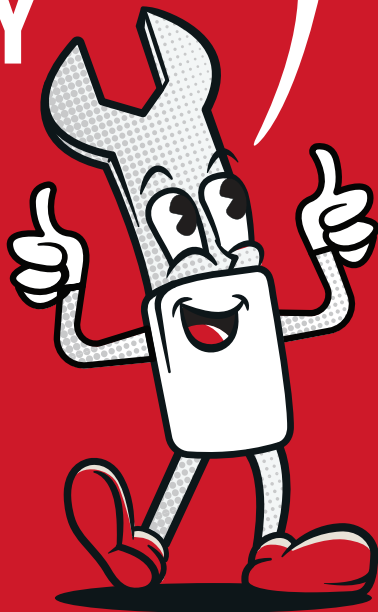


ROAD & E-BIKES

# QUICK ASSEMBLY GUIDE

*You got this!*



**TREK**

**⚠ WARNING:** Failure to follow the assembly instructions outlined in this guide could lead to an accident, which could cause serious injury or death.

**❗ IMPORTANT:** This assembly guide is not a replacement for the Trek Owner's Manual or other instructions required for your bicycle. The Trek Owner's Manual contains essential safety information that you must read and understand before riding your new bike. The manual is included in the box and can also be found at [trekbikes.com/manuals](http://trekbikes.com/manuals).

**⚠ WARNING:** You add to the risk of injury if you use your bicycle in an incorrect manner. Misuse can add stress to the bike and cause the frame or components to break. To decrease your risk of injury, use the bicycle in the manner for which it was designed (see the "Use conditions & weight limits" section in the Trek Owner's Manual).

**▶** To see the guide and watch the assembly video, use this QR code: [trekbikes.com/how-to-assemble-bike](http://trekbikes.com/how-to-assemble-bike) > Road bikes



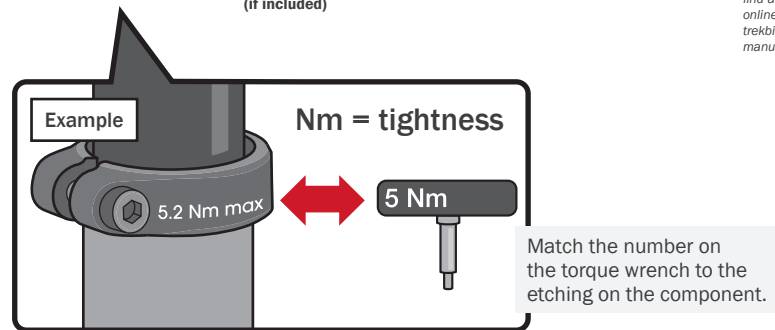
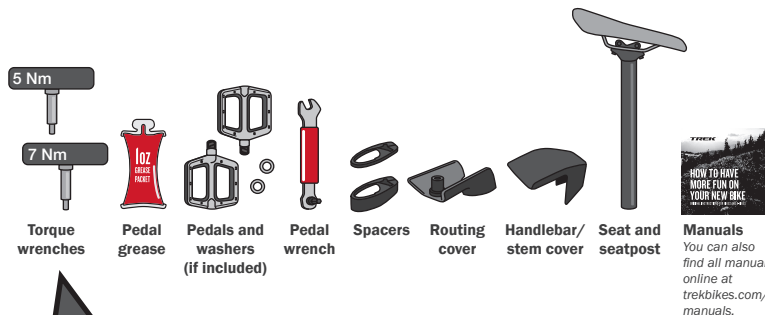
**❗** If you are unsure about the final assembly, take your bike to a Trek retailer for an assembly inspection before riding.

**⚠ WARNING:** Use only hardware supplied by Trek to complete the assembly of the bicycle.



## Remove the tools from the tool box.

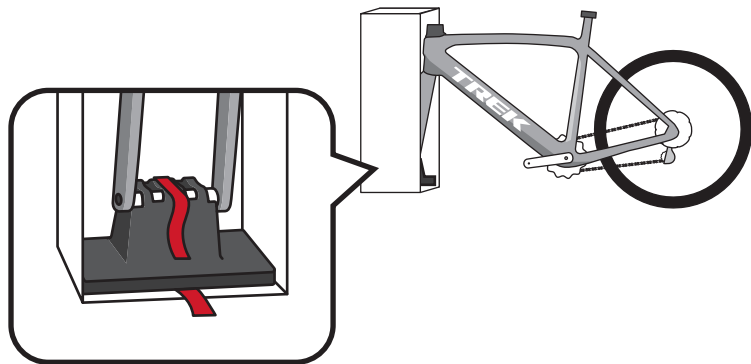
Parts and tools will vary based on bike model. Not all tools are provided (such as a tire pump).



## UNBOXING

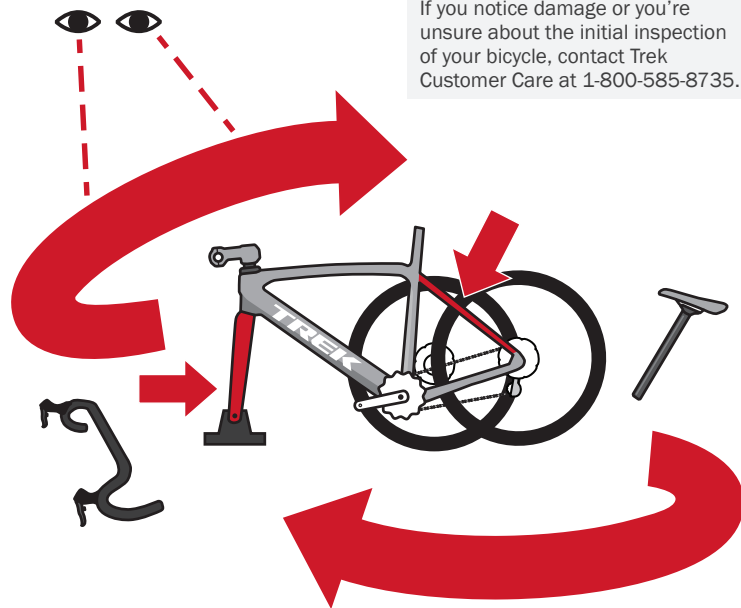
2

Take the bike out of the box and remove the cardboard around the fork.



3

Check the bike for shipping damage and make sure all parts are included. Pay special attention to the fork legs and the seat stays (both inside and outside surfaces).

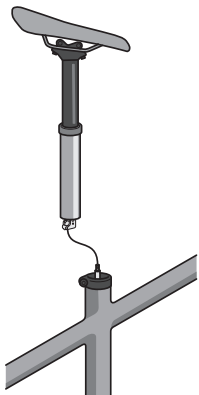


## DROPPER POST

4

Is there a dropper post that is not installed  
(Checkpoint ALR only)?

For e-bikes, make sure your  
e-system is off before assembly.



Yes

Go to step **5**

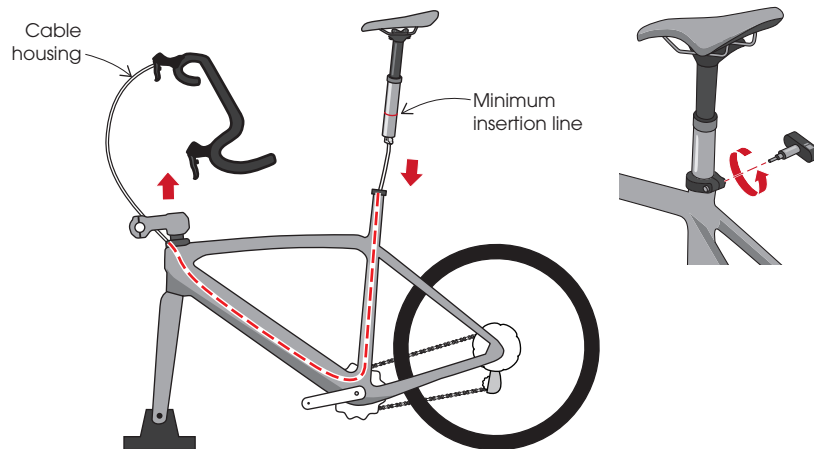


No

Skip to step **6**

5

Use one hand to pull the cable housing out of the frame while inserting the dropper seatpost with the other hand (this prevents the cable housing from kinking). After the minimum insertion line is no longer visible, tighten the seatpost clamp bolt until you feel the tool click.

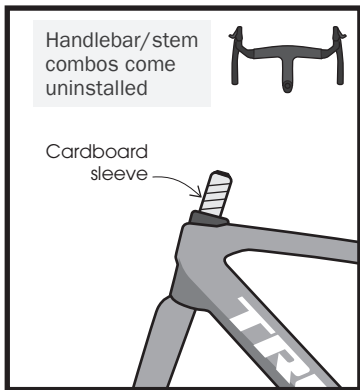


Skip to



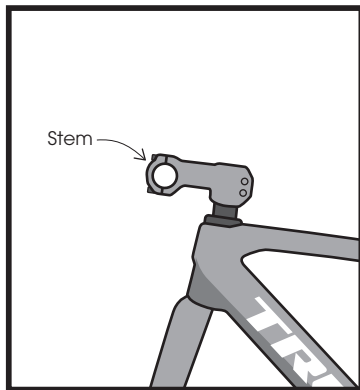
## 6

Is the stem installed?



No

Go to **7**

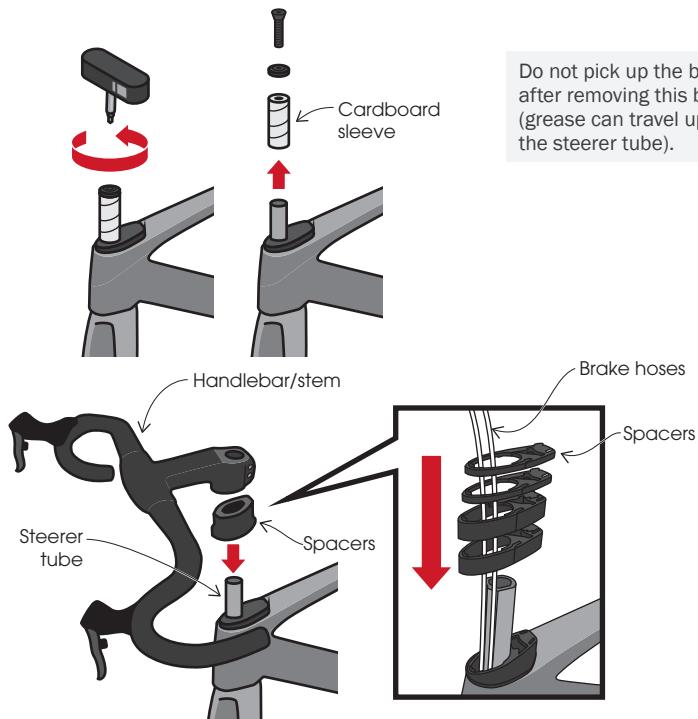


Yes

Skip to **11**

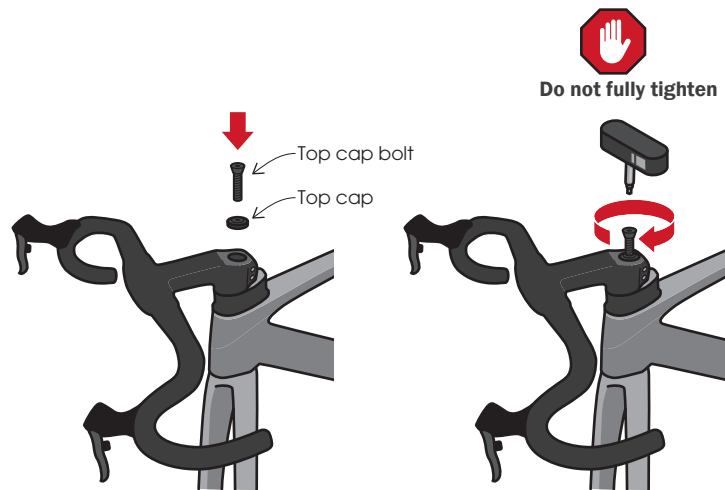
## 7

Remove the cardboard sleeve. Connect the spacers around the brake hoses and slide them down the steerer tube. Then slide the handlebar/stem down the steerer tube.

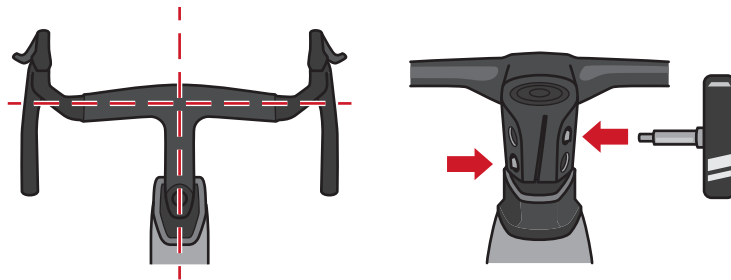


**8**

Reinstall the top cap and bolt. Tighten the bolt until it's snug (you will verify and adjust the tightness later).

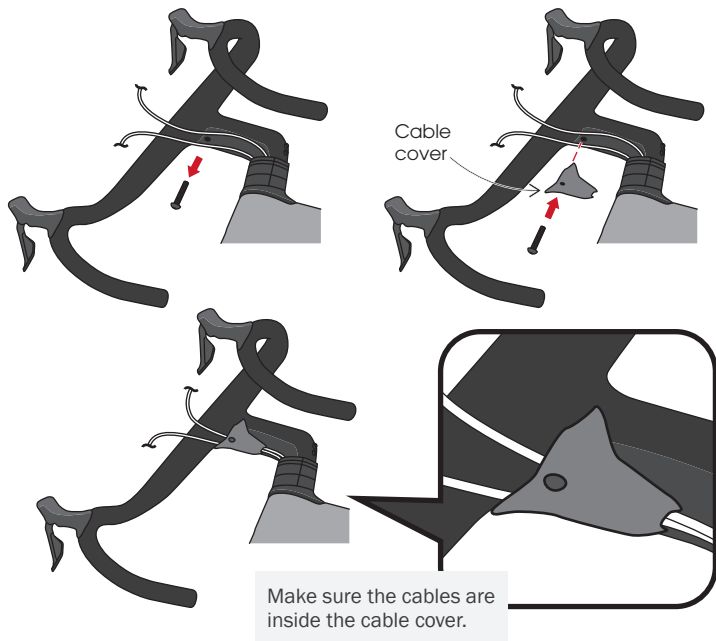
**9**

Align the handlebar and loosely tighten each stem bolt.



10

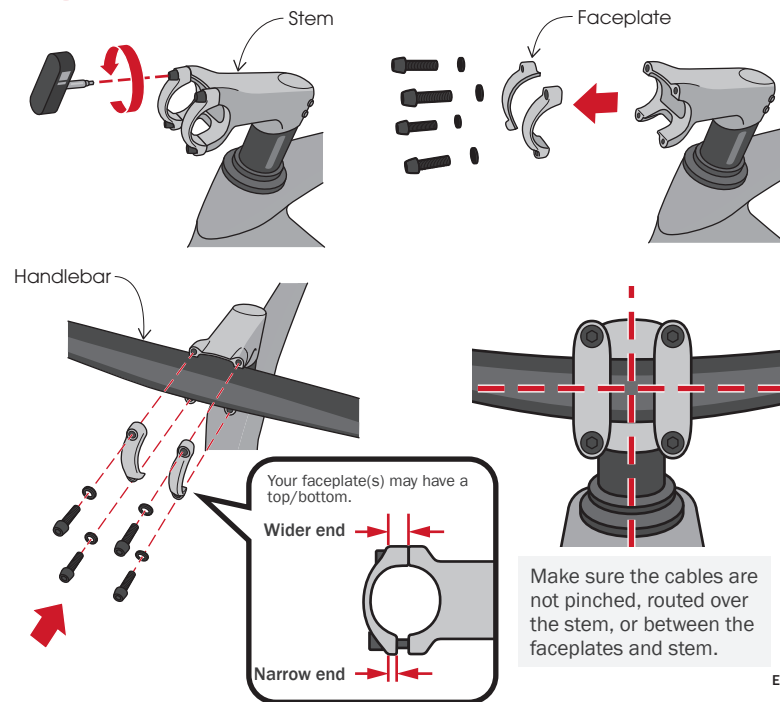
If there is a cable cover included the tool box, remove the bolt under the handlebar/stem and install it over the cables. Tighten the bolt until you feel the tool click.



Skip to 16

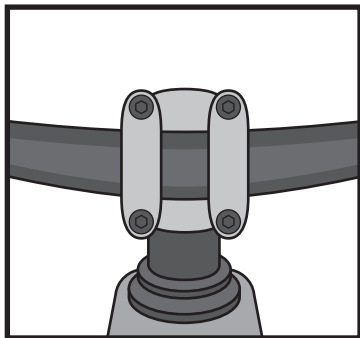
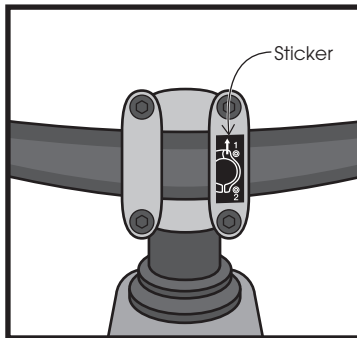
11

Attach and align the handlebar. Do not fully tighten the bolts (there is a specific tightening order).

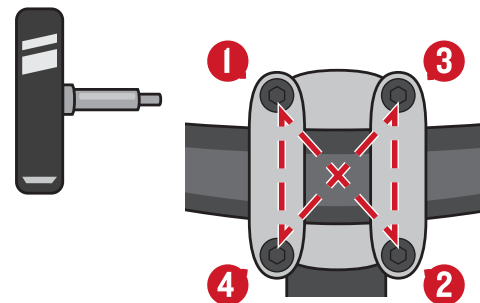


**12**

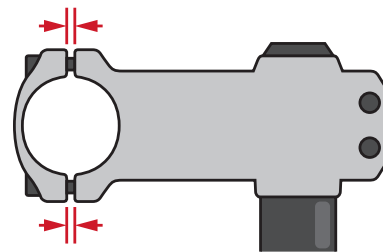
Is there a sticker on the faceplate?

**No**Go to **13****Yes**Skip to **15****13**

Tighten the faceplate bolts one half turn at a time — in an X pattern — until you feel the tool click.



Make sure the gap is equal on the top and bottom. If the spacing is unequal, loosen the bolts and retighten them following the order above.

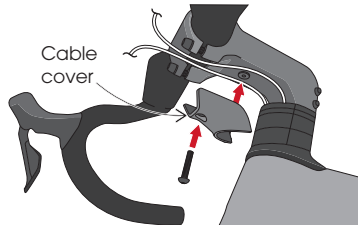
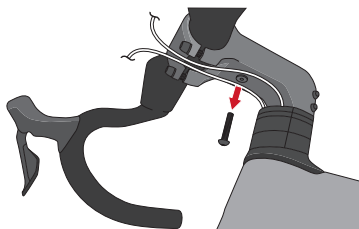




14

If there is a cable cover included the tool box, remove the bolt under the stem and install the cable cover over the cables. Tighten the bolt until it's snug.

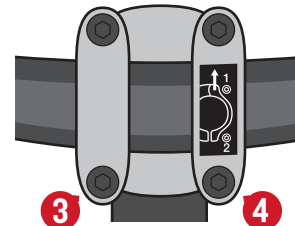
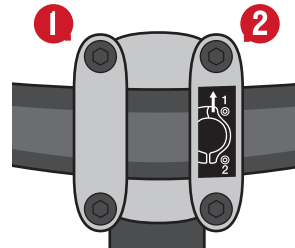
Make sure the cables are inside the cable cover.



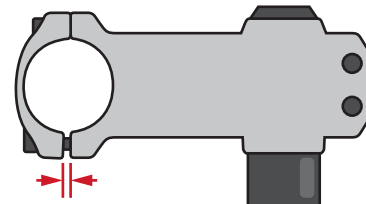
Skip to 16

15

Tighten the top two faceplate bolts one half turn at a time — switching back and forth — until you hear the tool click. Then tighten the bottom two.

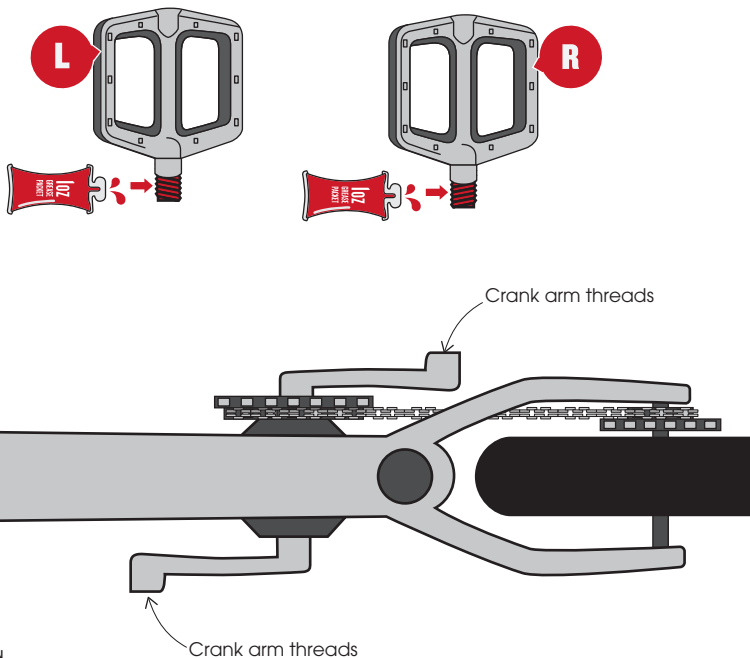


Make sure the top is touching and there is a gap on the bottom. If there is a gap at the top, loosen the bolts and retighten them following the order above.



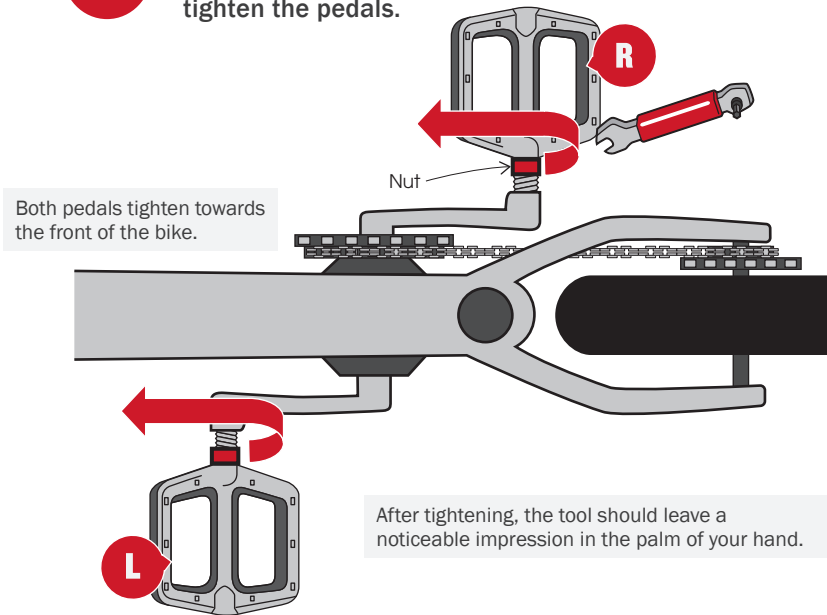
## 16

Grease the pedal threads and clean the crank arm threads (there may be residue from the packaging strap). If included, install the washers over the pedal threads first.



## 17

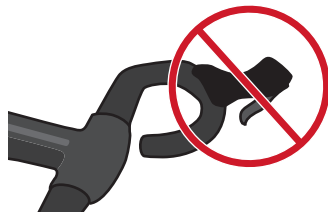
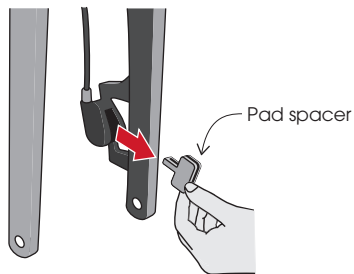
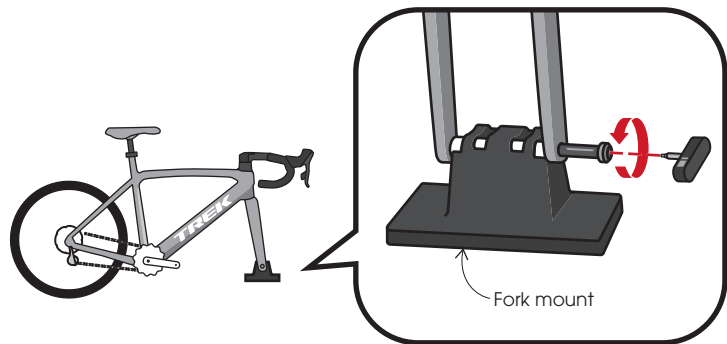
Thread the pedals in by hand — tightening by the nut, not the pedal. Then use the pedal wrench to fully tighten the pedals.



**⚠ WARNING:** The chainring has sharp points. Be careful when working around the chainring. Failure to do so may result in cut or pinched skin.

## 18

Remove the axle and fork mount from the fork. Then remove the brake pad spacer.

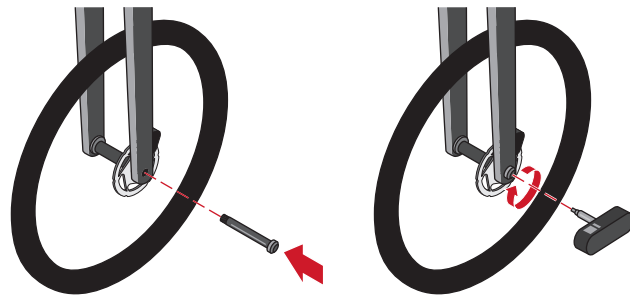
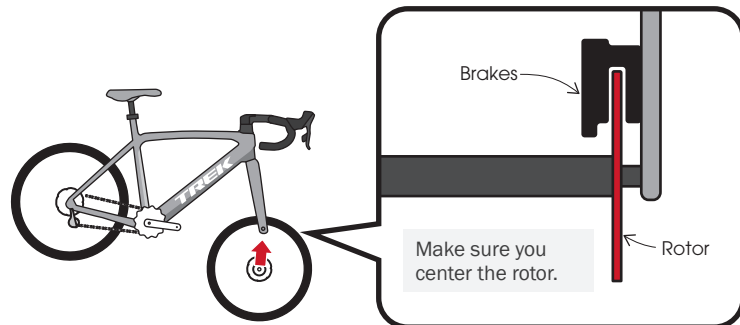


Do not squeeze the brakes until you attach the front wheel. After removing the brake pad spacer, squeezing the brakes can close the brake pads and make it difficult to reopen them.

EN

## 19

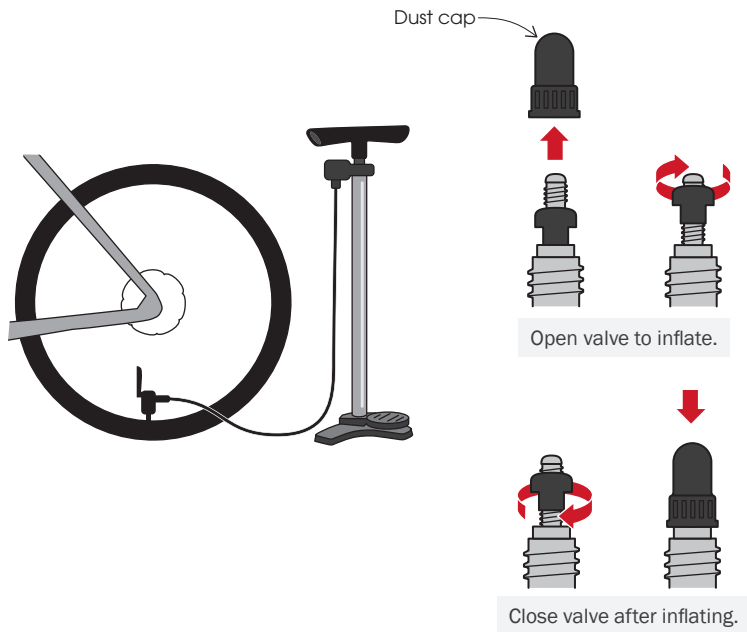
Grab the front wheel, lift the bike, and insert the front wheel. Install the axle and tighten until you feel the tool click.



EN

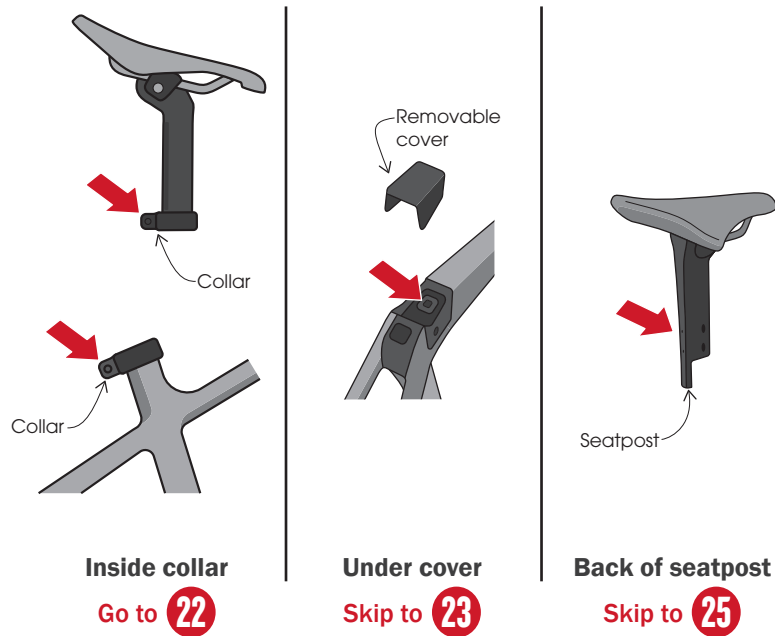
20

Inflate both tires to within the pressure range listed on the tire.



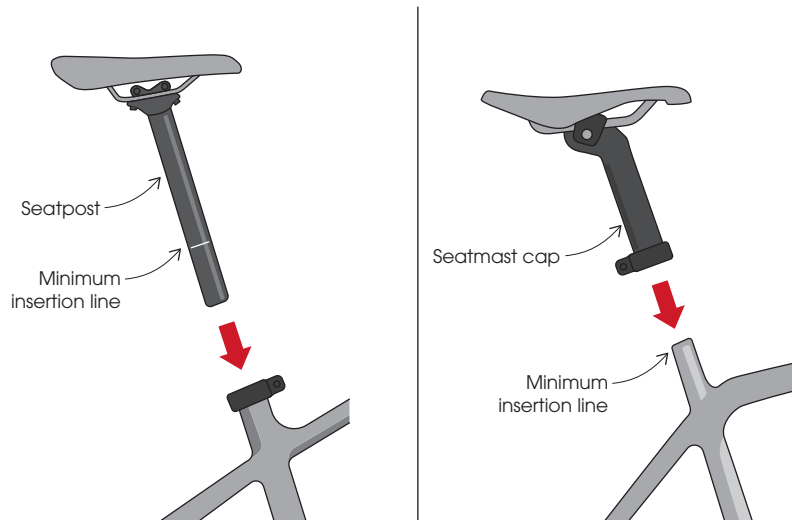
21

Where is the bolt that secures the seatpost?



**22**

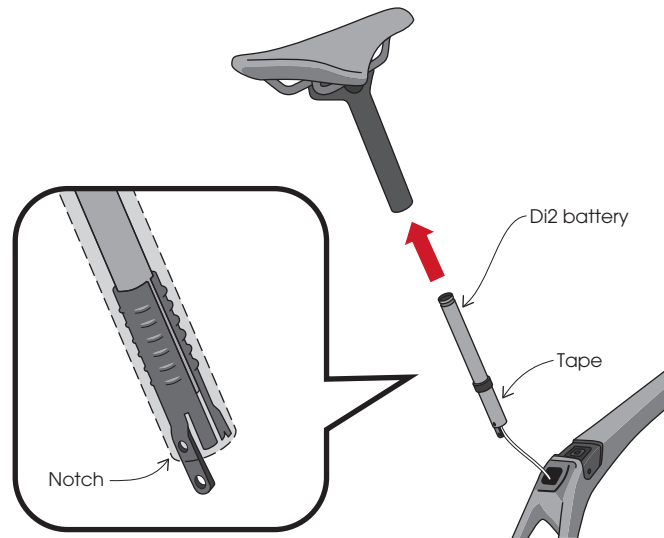
Insert the seatpost/seatmast (you will adjust the saddle height later).



Skip to **26**

**23**

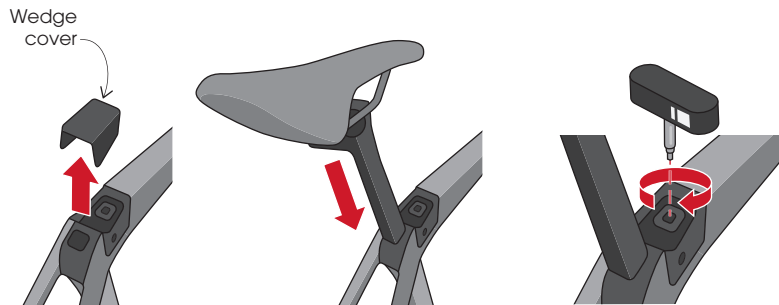
If there is a battery sticking out of the frame, insert it into the seatpost. Leave the tape on that holds the battery assembly together.



Do not pull the wires out of the frame any farther.

**24**

Remove the wedge cover or flip open the cover. Then insert the seatpost (you will adjust the saddle height later).



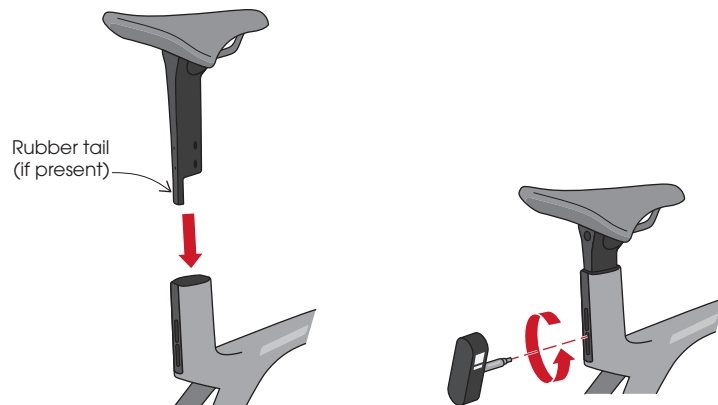
Wedge cover

Gently pull one side of the wedge cover to remove it.

Do not lower the seatpost all the way down to the stop point. There must be at least a 5 mm gap between the bottom of the seatpost and the stop point.

**25**

Insert the seatpost (you will adjust the saddle height later).



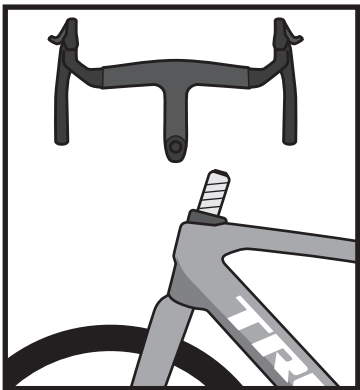
Rubber tail (if present)

Leave the rubber tail inside the seatpost (it prevents the seatpost from being tightened too low).

Skip to **26**

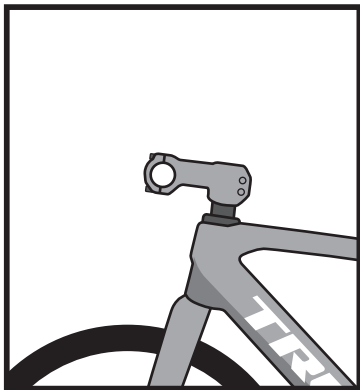
## 26

Does the bike have a handlebar/stem combo?



Yes

Go to **27**



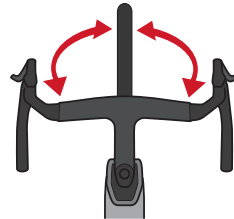
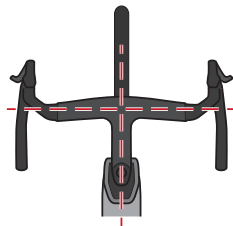
No

Skip to **29**

## 27

### 1. Align the handlebar/stem

If the handlebar/stem is not aligned with the front wheel, loosen the stem bolts, align it, and retighten the stem bolts — switching side-to-side — until you feel the tool click.



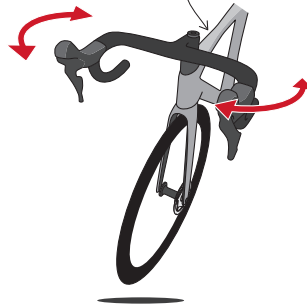
### 2. Verify steering tightness

Pick up the top tube and tap the handlebar with your hand.

- Too loose — the handlebar moves without touching it.
- Too tight — it takes force to move the handlebar.

If necessary, adjust the handlebar/stem tightness following the order on the next page.

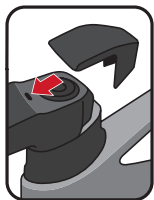
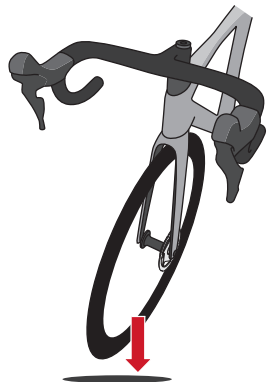
Pick up the bike here



28

### 3. Verify the handlebar/ stem assembly is tight

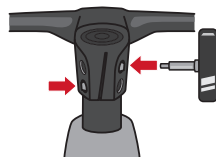
Pick up the bike by the handlebar/  
stem and drop it a few inches. If  
there is any noticeable looseness,  
adjust it following the order to the  
right. You may have to adjust the  
spacers so they fit tight.



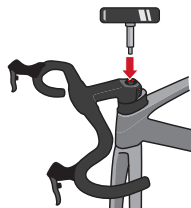
Install the cover (if  
there is one in the  
tool box).

### Adjust handlebar/stem

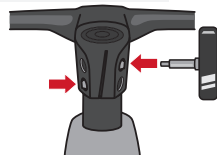
1. Loosen stem bolts



2. Tighten/loosen top  
cap bolt 1/8 turn  
at a time and retest



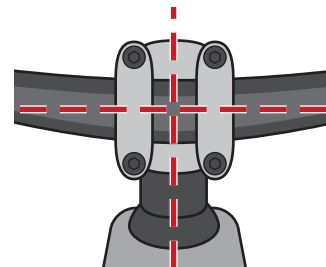
3. Tighten stem bolts



Skip to **30**

29

Now that the front wheel is installed, verify the  
handlebar is level with the floor. Adjust, as necessary  
(see Steps 11-15).





30

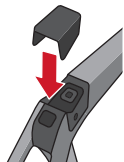
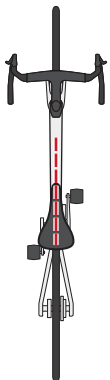
Adjust the seat height to your riding preference. Raise or lower the seatpost as needed and tighten the bolt.

**Dropper post only** — adjust the saddle height with the dropper fully extended. If you need to lower the dropper seatpost into the frame, pull out the cable housing from the frame an equal length (see Step 4).



In a normal riding position, your knee should be slightly bent at the bottom of your pedal stroke.

Align the seat with the top tube.



Reinstall the wedge cover (if you have one).

## BICYCLE ASSEMBLY CHECKLIST

Before and after your first ride, complete this checklist:

- Dropper post installed correctly? (Step 5)
- Handlebar/stem combo properly installed? (Steps 6-9, 27-28)
- Handlebar aligned and faceplate bolts properly tightened? (Step 11-15, 29)
- Pedals installed correctly and tightened? (Steps 16-17)
- Front wheel installed correctly? (Steps 18-19)
- Seatpost installed correctly? (Step 21-25)
- Read the Trek Owner's Manual (included with your bike).
- Register your bicycle.
- Perform a pre-ride check.

For more detailed information, see the service manual on [Trekbikes.com](http://Trekbikes.com) > click on your bike > Service > Service manual.



Register your bike at [trekbikes.com/productRegistration/](http://trekbikes.com/productRegistration/)



Watch the Pre-Ride Check video on the Trek Bicycle YouTube channel.

# RIDE BIKES HAVE FUN FEEL GOOD

**WARRANTY:** For information about your bike's warranty, please see [trekbikes.com/inside\\_trek/warrantied\\_for\\_life](https://trekbikes.com/inside_trek/warrantied_for_life).



---

**QUESTIONS?** Please contact your local Trek bike shop, call Trek Customer Care at 800-585-8735 from 9am – 5:30pm Monday – Friday CST, or chat with us at [trekbikes.com/contactus](https://trekbikes.com/contactus).



**TREK**

PN 5327030