

TREK



CHRgtime Charging Station

Owner's Manual

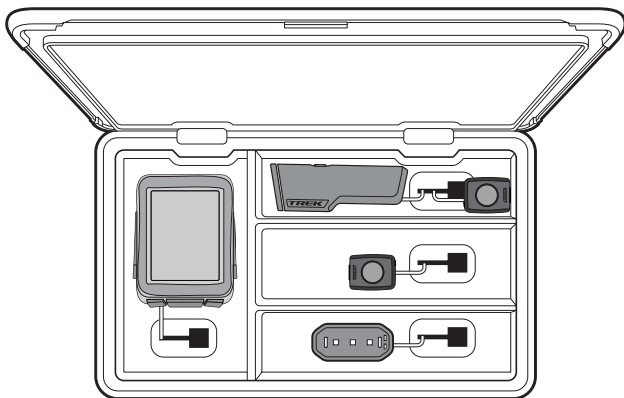
<u>About this product</u>	1
<u>In the box</u>	2
<u>Charging</u>	3
<u>Charging larger items</u>	4
<u>Cable routing diagram</u>	5
<u>Cable routing tips</u>	6
<u>Stickers</u>	7
<u>Specifications</u>	8
<u>Regulatory compliance</u>	9-10
<u>Contact information</u>	11

About this product

Use CHRGtime to neatly store and charge your cycling electronic devices: front lights, rear lights, GPS computers, electronic shifting batteries, and more.

WARNING

Ensure all devices placed in this product are turned off. Lights may be hot and could cause a burn injury or damage to material they may contact. Do not activate (turn on) lights in enclosed areas or inside the CHRGtime product for risk of fire. Failure to follow this warning could result in death or serious injury.

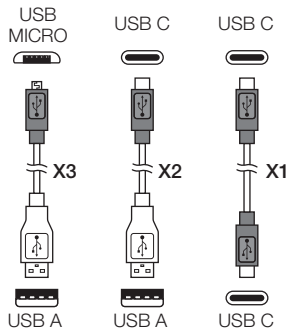
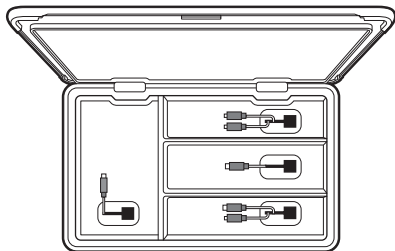


For more information

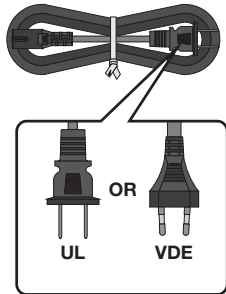
If you have questions that are not answered in this manual, talk to your Trek retailer or visit trekbikes.com/support.

In the box

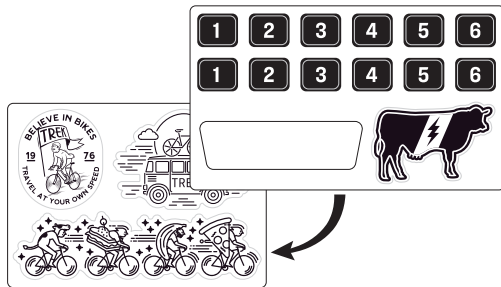
Charging station



Power cord (AC plug)



Stickers



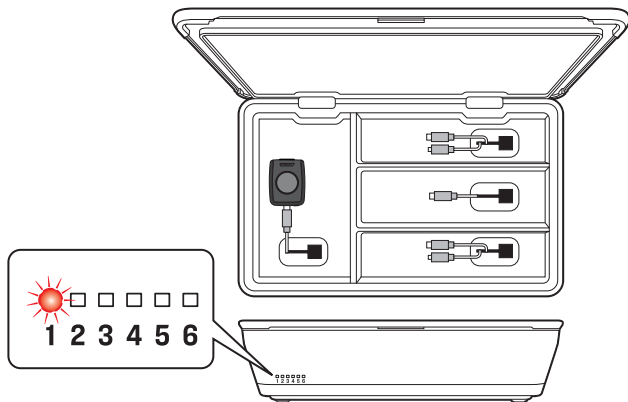
Charging

To get started, plug the power cord into the back of the CHRGtime and into a wall outlet. Then, connect a charging cable to your device and it will begin charging automatically. The corresponding charge indicator light will turn red until the device is fully charged.



NOTICE: Use the CHRGtime indoors only. Charging electronics outdoors could allow moisture into the device and damage components. For best results, charge at room temperature in a dry place.

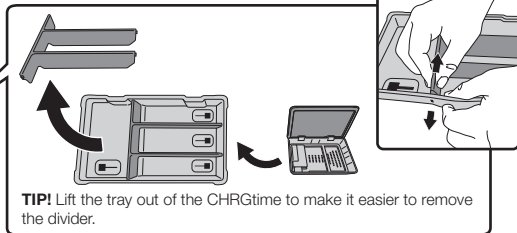
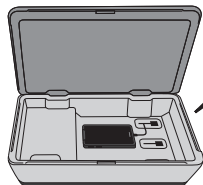
NON-TREK/BONTRAGER PRODUCTS: For non-Trek/Bontrager devices, the indicator light may not turn off after the device is fully charged. Check the device itself to verify charge.



Charging larger items

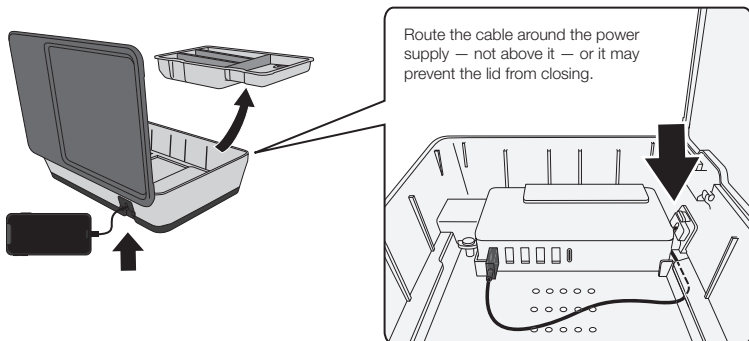
Option #1

Remove the tray divider to fit larger items in the CHRGtime.



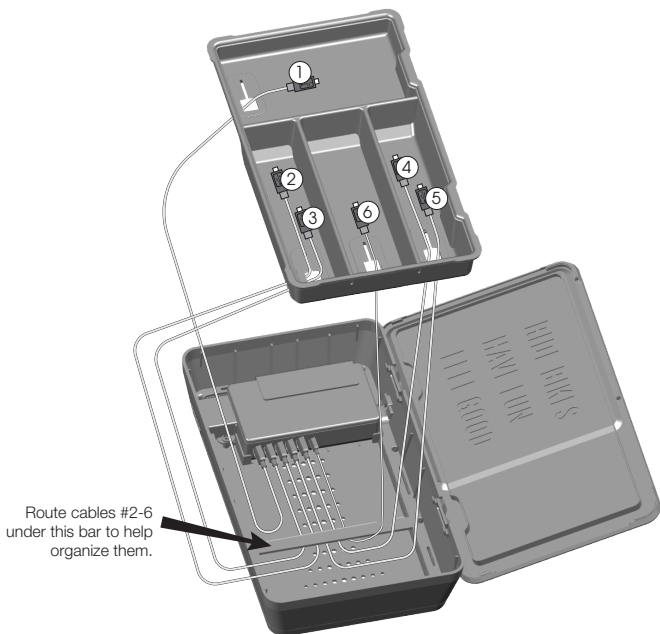
Option #2

Route a cable out the escape port (above the power cord port) to charge items outside of the CHRGtime.



Cable routing diagram

The diagram below shows how the cables are routed to the power supply. You can route the cables in a different order depending on what devices you need to charge.

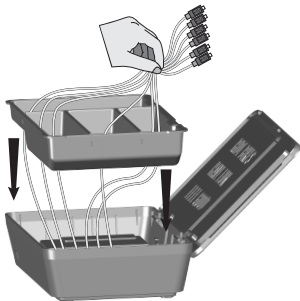


Cable routing tips

See the tips below to help you organize the cables. There is space under the tray for excess cable storage.

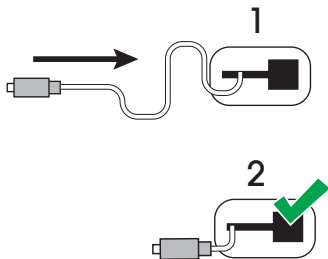
Tip #1

Pull the cables up when lowering the tray to reduce slack. This helps prevent the cables from getting caught or stuck.



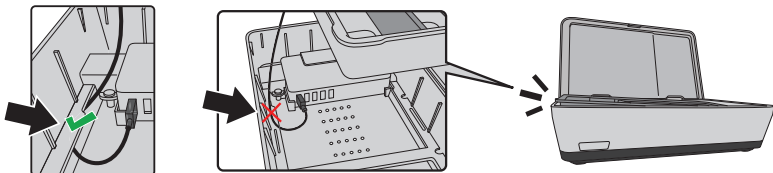
Tip #2

Feed any cable slack under the tray to make more room for electronics.

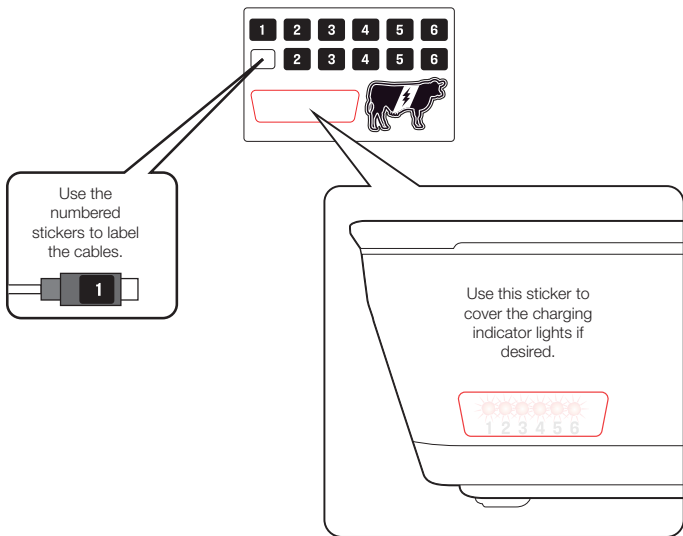


Tip #3

Make sure the cable feeding the larger compartment is under the lip.



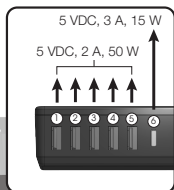
Stickers



Specifications

Output

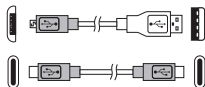
Current: 13 A max
Power : 65 W max



Input

100-240 VAC, 2 A, 50/60 Hz

Cable requirements (if using your own)



Must be a compliant USB cable (e.g., UL certified) rated for 2 amps or greater.

Ecodesign requirements

Average active efficiency: 89.17%

Efficiency at low load (10%): 86.19%

No-load power consumption: 0.07 W

FCC Compliance

This device complies with Part 15 of the FCC Rules. Operation is subject to the following two conditions: (1) This device may not cause harmful interference, and (2) this device must accept any interference received, including interference that may cause undesired operation. Note: This equipment has been tested and found to comply with the limits for a Class B digital device, pursuant to Part 15 of the FCC Rules. These limits are designed to provide reasonable protection against harmful interference in a residential installation. This equipment generates, uses, and can radiate radio frequency energy and, if not installed and used in accordance with the instructions, may cause harmful interference to radio communications. However, there is no guarantee that interference will not occur in a particular installation. If this equipment does cause harmful interference to radio or television reception, which can be determined by turning the equipment off and on, the user is encouraged to try to correct the interference by one or more of the following measures: (1) Reorient or relocate the receiving antenna. (2) Increase the separation between the equipment and receiver. (3) Connect the equipment into an outlet on a circuit different from that to which the receiver is connected. (4) Consult the dealer or an experienced radio / TV technician for help.

NOTES: TREK BICYCLE CORPORATION IS NOT RESPONSIBLE FOR ANY RADIO OR TV INTERFERENCE CAUSED BY UNAUTHORIZED MODIFICATIONS TO THIS EQUIPMENT. ANY CHANGES OR MODIFICATIONS NOT EXPRESSLY APPROVED BY TREK BICYCLE CORPORATION OF THIS DEVICE COULD VOID THE USER'S AUTHORITY TO OPERATE THE DEVICE.

Attention

This product is designed for use with IT equipment only.

This product is designed for indoor use only.

If you want to clean the product, only use a dry cloth or brush.

The power supply is not intended to be repaired by service personnel. In case of failure or component defect, properly dispose of the product.

The outlet shall be installed near the equipment and shall be easily accessible.

The disconnection from line voltage is made by the power cord (AC plug).

Refer to the marking label on the unit for input and output ratings. Do not overload the power supply.

To reduce the risk of fire or electric shock, do not expose this unit to rain or moisture, including any dripping or splashing.

Disconnect devices from charging station when fully charged.

Operating temperature range: 0°C – 40°C (32°F – 104°F)



European Union Compliance



Trek Bicycle Corporation hereby declares that the device identified as CHRGtime is in compliance with the following European Directives:

- EMC Directive 2014/30/EU
- Low Voltage Directive 2014/35/EU
- RoHS Directive 2011/65/EU, 2015/863/EU and (EU) 2017/2102
- Ecodesign Directive 2009/125/EC

The full text of the EU declaration of conformity is available from your dealer or at the following internet address: www.trekbikes.com/coc-doc

UK Compliance



Trek Bicycle Corporation hereby declares that the device identified as CHRGtime is in compliance with the following UK legislation:

- The Electromagnetic Compatibility Regulations 2016
- Electrical Equipment (Safety) Regulations 2016
- The Restriction of the Use of Certain Hazardous Substances in Electrical and Electronic Equipment Regulations 2012
- The Ecodesign for Energy-Related Products and Energy Information 2014 No. 1290

Full text of the UK declaration of conformity is available from your dealer or at the following internet address: www.trekbikes.com/coc-doc.

IC Compliance

This device complies with Industry Canada license-ICES-003. Operation is subject to the following two conditions: (1) This device may not cause interference, and (2) This device must accept any interference, including interference that may cause undesired operation of the device.

Le présent appareil est conforme aux CNR d'Industrie Canada applicables aux appareils radio exempts de licence. L'exploitation est autorisée aux deux conditions suivantes : (1) l'appareil ne doit pas produire de brouillage, et (2) l'utilisateur de l'appareil doit accepter tout brouillage radioélectrique subi, même si le brouillage est susceptible d'en compromettre le fonctionnement.

IC Statement - This digital apparatus complies with CAN ICES-3(B)/NMB-3(B)

Trek Bicycle Corporation contact information:

North America

Trek Bicycle Corporation
801 West Madison Street
Waterloo, WI 53594 USA
Tel: 1-800-585-8735

Europe

Bikeurope BV
Ceintuurbaan 2-20C
3847 LG Harderwijk
The Netherlands
Tel: +31 (0)88 4500699

Australia

Trek Bicycle Corp. Au.
8 Townsville Street
(Level One)
Fyshwick (ACT)
2609 AU
Tel: +61 (02) 61 732 400

Trek Brazil Office

Avenida Rebouças, 3642
Sao Paulo, SP - 05402-600

South Korea

5th floor, 312, Yeongdong-daero
Gangnam-gu, Seoul
Republic of Korea
ZIP Code: 06177

Japan

7-28 Oide-cho
Nishinomiya-shi, Hyogo-ken
Japan 662-0036

China Office (Beijing)

Building 26-3, Ronghuiyuan, Yuhua Road
Airport Industrial Development Zone B
Shunyi, Beijing, P.R. China 101318

United Kingdom

Trek Bicycle Corporation, Ltd.
9 Sherbourne Drive, Tillbrook,
Milton Keynes, MK7 8HX
TEL: +44 1908 360 140

Trek Bicycle SA (Pty) Ltd

The Braides Office Park
Block B - 113 Bowling Avenue
Gallo Manor, Johannesburg 2052
South Africa