



## Commuter Comp R and Flare R City

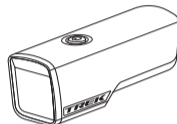


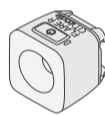

trekbikes.com

PN 5257980

### For more information

If you need help not offered by this manual, talk to your Trek retailer or visit [trekbikes.com](http://trekbikes.com).

### Parts list


Commuter Comp R (included)	
Light	
Mount	<b>Quick-connect plus mount</b> Designed to work with 22.2, 25, 31.8, and 35mm handlebars. PN W593503 
Charging Cable	<b>Micro USB Cable</b> PN W59136 (4-wire) 
Flare R City (included)	
Light	
Mount	<b>Quick-connect bracket for tail light</b> PN W533846 

### WARNING:

A bicycle without correct lights and reflectors might be difficult for other people to see, and you might not be able to see them. If you cannot see, or other people cannot see you, you could have an accident. Make sure your lights are set up, operating correctly, and that batteries are charged.

Table 1

Modes, runtimes, and battery life

Power Button/Status LED	Mode	Max Output (lumens)	Runtime (hours)	Power Button/Status LED Color	Battery Life, %
	AG High	450	2	Green Steady	25% – 100%
	AG Low	200	9	Red Steady	5% – 25%
	Day Flash	300	22	Red Flashing	< 5%

### Basic operation Commuter Comp R (see Table 1)

- To turn on, double click the power button.
- To turn off, press and hold the power button for 1 second.
- To change modes, single-click the power button to advance through the mode list:  
High > Low > Day Flash

Flash Bypass: See below.

### Enable/Disable Flash Bypass mode

For riding at night, you can disable the flash mode to easily transition between steady (basic) modes.

- To enable Flash Bypass mode: With the light on, press and hold the power button for 8 seconds. The main LED will flash once at 8 seconds. Flash Bypass mode changes the light from flashing to steady. In this setting, a single button click will alternate between High and Low modes only — no flash.

### Reset

- To reset the light to factory default settings:
- With the light off, press and hold the power button for 15 seconds. The main LED will flash once at 8 seconds and again at 15 seconds.
  - Release the button after the second flash.

### Basic operation Flare R City (see Table 2)

- To power on, press the power button. The light will be in the output mode last used.
- To power off, press and hold the power button until the light turns off.

### Auto brightness

The lights automatically adjust their brightness for maximum visibility and battery conservation. The Flare R City gets brighter as ambient light increases (day), and dimmer as ambient light decreases (night).

**NOTE:** When auto brightness is enabled, Flare R City modes are auto flash, or auto steady.

To disable or enable auto brightness, press and hold the power button 8 seconds. The main LED will flash once.



### About this product

The **Commuter Comp R** is a front light with a rechargeable lithium-ion battery. This light is designed for bike path users in low light conditions.

The beam is cut-off and reduces the glare in the eyes of oncoming riders and traffic.

The **Flare R City** is a rear light for added safety.



### WARNING:

The front light is very bright. Do not stare at an operating front light. Staring may be harmful to the eyes.

### WARNING:

The front light may be hot and could cause a burn or damage material it may contact. Do not activate (turn on) light in enclosed area.

### WARNING:

Do not use if the battery is impacted. Also do not puncture, crush, deform, disassemble, or heat a lithium-ion battery above the permitted temperature. Inflicted damage to the battery may result in a fire, explosion, or coming in contact with specks of lithium or lithium dust.

**IMPORTANT:** Check your local lighting laws. Flashing lights and full brightness may not be allowed in all locations. The Commuter Comp R and the Flare R City light do not conform to the German road traffic regulation StVZO.

### Specifications

- Battery charging and operating temperature:** 32°F to 104°F (0°C to 40°C)
  - If the light is plugged in while outside of this range, the LED indicator will show 3 red flashes with pause until the light is within this temperature range.
  - Reduced performance when operating below freezing.
- Commuter Comp R:** 3550mAh, 3.6V. 12.06Wh, 18650 Lithium-ion  
Weight: 120g, ingress rating: IPX4
- Flare R City:** 250mAh, 3.7Vdc, 0.9Wh, 35 lumens.  
Weight: 27g (1.0 oz) light and mount, ingress rating: IP46

Table 2

### Flare R City mode change

Quick-press the power button. Each press moves to the next mode.

Mode*	Max Output (lumens)	Runtime (hours)	Auto Brightness
<b>Auto flash</b>	Day	35	8
	Night	35	16
<b>Auto steady</b>	Day	20	3
	Night	2	20

\*With auto brightness enabled.

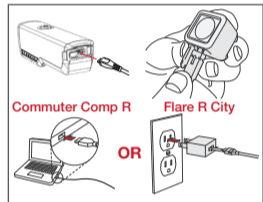
### Battery charging and care (see Table 3)

Both the Commuter Comp R and Flare R City were charged prior to packaging, but we recommend that you charge them before first use.

### To charge the battery

**IMPORTANT:** For best results, charge at room temperature in a dry place. Use a certified CE or UL approved Micro USB charger rated for 500 mA or greater. Avoid extreme conditions including wet, cold, or extreme heat.

- Open the USB port cover.
- Plug the Micro USB charger cable into the USB port on the light.
- Plug the cable into a computer or wall adapter.
- When the charge is complete, unplug the Micro USB charger cable and close the USB port cover.



**IMPORTANT:** Ensure the USB cover is latched before riding in rain or in wet conditions. If the USB cover is not closed, damage to the light may occur. Do not leave the lights outdoors when not in use.

Table 3

### Commuter Comp R battery charging and care

Power Button/Status LED Color	Charge, %	Charge Duration (hours)
Red flash	0% – 75%	8.5
Green flash	75% – 99%	
Green steady <sup>1</sup>	100%	

- When fully charged, status LED remains steady for 1 minute then turns off.
- When plugged in after the battery is completely discharged, it may take a minute for the LED indicator to turn on indicating a charge is occurring.

Table 4

### Flare R City battery status feature

The status LED tells the percent of battery charge that remains.

Power Button/Status LED Color	Charge, %	Charge Duration (hours)
Red steady	5% – 25%	1.5
Red flashing	< 5%	

### Low battery feature Commuter Comp R

When the battery has fallen below 25% life, the indicator LED will turn red. At 5% battery life, the indicator LED will signal low battery mode.

### Low battery feature Flare R City

The light automatically changes to low battery flash mode when the battery supply goes below 5%. This extends the light output for an additional hour.

### Caring for the battery

- Store the light at room temperature in a dry place. Avoid moisture, or extreme hot or cold.
- Store the light in a charged condition. Battery life will decrease if the battery is stored in a fully discharged condition.
- Over time, the runtime of the battery will diminish. Expect about 500 full charges, depending on care. After a full life, the battery will continue to charge but with a lower runtime. When the runtime is unsatisfactory, do not open the case of the light or incinerate; please recycle.

### Traveling with the battery

When traveling by air, verify with your carrier how lithium ion batteries of this capacity must be treated. Often these lights need to be packed in carry-on luggage.

### Protection

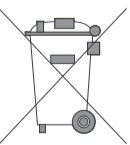
These lights are designed and tested for use in all riding conditions and have an ingress rating of IPX4 (Commuter Comp R) and IP46 (Flare R City). Lights are not intended to be stored outdoors and should be stored indoors after use.

### Recycling

Please recycle the light with the battery. In the US, you can find out where to do this at [www.call2recycle.org](http://www.call2recycle.org).

European and International consumers, please contact your bike shop.

This symbol on the product(s) and / or accompanying documents means that used electrical and electronic products should not be mixed with general household waste. For proper treatment, recovery and recycling, outside the US, please take this product(s) to designated collection points. Alternatively, in some countries you may be able to return your products to your local retailer upon purchase of an equivalent new product. Disposing of this product correctly will help save valuable resources and prevent any potential negative effects on human health and the environment, which could otherwise arise from inappropriate waste handling. Please contact your local authority for further details of your nearest designated collection point. Penalties may be applicable for incorrect disposal of this waste, in accordance with your national legislation.



## Light installation

### Commuter Comp R installation

**NOTE:** Due to the unique cutoff beam, this front light cannot be mounted upside down.

1. Slide the light onto the quick-connect plus mount until it locks in place

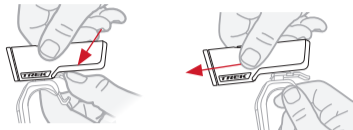


2. Stretch the mount strap around the handlebar and connect the hook in the appropriate slot. When correctly installed, the light should be parallel to the ground.



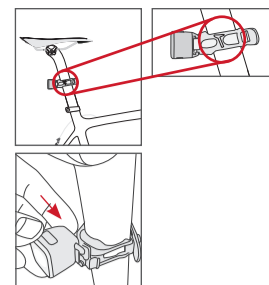
### Removal

1. Press down on the mount release tab.
2. Slide the light forward to remove.



### Flare R City installation

1. Install the quick-connect bracket on the seatpost with the lever to the drive side of the bike. When installed properly, the lens will be perpendicular to the ground and the saddle icon will point the same direction as the saddle on the bike.
2. Stretch the strap around the seatpost and connect to the hook.
3. Slide the light onto the bracket.



## Trek Bicycle Corporation contact information:

### North America

Trek Bicycle Corporation  
801 West Madison Street  
Waterloo, WI 53594 USA  
Tel: 1-800-585-8735

### Europe

Bikeurope BV  
Ceintuurbaan 2-20C  
3847 LG Harderwijk  
The Netherlands  
Tel: +31 (0)88 4500699

### Australia

Trek Bicycle Corp. Au.  
8 Townsville Street  
(Level One)  
Fyshwick (ACT)  
2609 AU  
Tel: +61 (02) 61 732 400

## Statements of Regulatory Compliance

### FCC Compliance

#### Commuter Comp R and Flare R City

These devices comply with part 15 of the FCC Rules. Operation is subject to the following conditions: (1) these devices may not cause harmful interference, and (2) these devices must accept any interference received, including interference that may cause undesired operation.

**NOTE:** This equipment has been tested and found to comply with the limits for a Class B digital device, pursuant to Part 15 of the FCC Rules. These limits are designed to provide reasonable protection against harmful interference in a residential installation. This equipment generates uses and can radiate radio frequency energy and, if not installed and used in accordance with the instructions, may cause harmful interference to radio communications. However, there is no guarantee that interference will not occur in a particular installation. These products may cause interference to radio equipment and should not be installed near maritime safety communications equipment or other critical navigation or communication equipment operating between 0.45-30 MHz.

If this equipment does cause harmful interference to radio or television reception, which can be determined by turning the equipment off and on, the user is encouraged to try to correct the interference by one or more of the following measures:

- Reorient or relocate the receiving antenna.
- Increase the separation between the equipment and receiver.
- Connect the equipment into an outlet on a circuit different from that to which the receiver is connected.
- Consult the dealer or experienced radio / TV technician for help.

**NOTES: TREK BICYCLE CORPORATION IS NOT RESPONSIBLE FOR ANY RADIO OR TV INTERFERENCE CAUSED BY UNAUTHORIZED MODIFICATIONS TO THIS EQUIPMENT. ANY CHANGES OR MODIFICATIONS NOT EXPRESSLY APPROVED BY TREK BICYCLE CORPORATION OF THIS DEVICE COULD VOID THE USER'S AUTHORITY TO OPERATE THE DEVICE.**

#### Exposure to radio frequency energy.

The radiated output power of this device meets the limits of FCC/IC radio frequency exposure limits. This device should be operated with a minimum separation distance of 5mm (1/4 inches) between the equipment and a person's body.

## European Union Compliance

Trek Bicycle Corporation and Bontrager hereby declare that the lighting device(s) identified as 'Commuter Comp R' and 'Flare R City' are in compliance with the following European Directives:

#### Commuter Comp R

- EMC Directive 2014/30/EU
- Low Voltage Directive 2014/35/EU
- RoHS Directive 2011/65/EU
- RoHS Directive 2015/863/EU

#### Flare R City

- EMC Directive 2014/30/EU
- Low Voltage Directive 2014/35/EU
- RoHS Directive 2011/65/EU
- RoHS Directive 2015/863/EU

The full text of the EU declaration of conformity is available from your dealer, or at the following internet address: <http://www.trekbikes.com/support>

The Commuter Comp R and the Flare R City do not conform to the German StVZO regulations.

## Industry Canada Compliance

CAN ICES-3(B)/NMB-3(B)

These devices comply with Industry Canada license-exempt RSS standard(s).

Operation is subject to the following two conditions: (1) these devices may not cause interference, and (2) these devices must accept any interference, including interference that may cause undesired operation of the device.

Leprésent appareil est conforme aux CNR d'Industrie Canada applicable aux appareils radio.

Exempts de licence. L'exploitation est autorisée aux deux conditions suivantes:

(1) l'appareil ne doit pas produire de brouillage, et (2) l'utilisateur de l'appareil doit accepter tout brouillage radioélectrique subi, même si le brouillage est susceptible d'en compromettre le fonctionnement.

The Commuter Comp R and the Flare R City lighting equipment comply with FCC and IC radiation exposure limits set forth for an uncontrolled environment. Status of the listing in the Industry Canada's REL (Radio Equipment List) can be found at the following web address:

<http://www.ic.gc.ca/app/sitt/reitel/srch/nwRdSrch.do?lang=eng>

Additional Canadian information on RF exposure also can be found at the following web address:

<http://www.ic.gc.ca/eic/site/smt-gst.nsf/eng/sf08792.html>

Cet appareil est conforme aux limites d'exposition à la fréquence radio (FR) d'IC et de FCC. La puissance de sortie émise par l'appareil de sans fil Ion Pro RT est inférieure à la limite d'exposition aux fréquences radio d'Industry Canada (IC). Cet appareil est en contact direct avec l'utilisateur dans des conditions normales d'utilisation. L'émetteur ne doit pas être co-implémenté ou utilisé conjointement avec une autre antenne ou un autre émetteur. Ce périphérique est homologué pour l'utilisation au Canada. Pour consulter l'entrée correspondant à l'appareil dans la liste d'équipement radio (REL - Radio Equipment List)d'Industry Canada rendez-vous sur: <http://www.ic.gc.ca/app/sitt/reitel/srch/nwRdSrch.do?lang=fra>

Pour des informations supplémentaires concernant l'exposition aux RF au Canada rendezvous sur:

<http://www.ic.gc.ca/eic/site/smt-gst.nsf/fra/sf08792.html>

If you wish to see these manuals in another language, please visit [www.trekbikes.com/support](http://www.trekbikes.com/support) and look for the Commuter Comp R and Flare R City manual on the Manuals and user guides page.

**CZ** If you wish to see these manuals in another language, please visit [www.trekbikes.com/support](http://www.trekbikes.com/support) and look for the Commuter Comp R and Flare R City manual on the Manuals and user guides page.

**DE** Wenn Sie dieses Handbuch in einer anderen Sprache lesen möchten, besuchen Sie bitte [www.trekbikes.com/support](http://www.trekbikes.com/support) und suchen Sie auf der Seite Handbücher und Benutzerhandbücher nach dem Commuter Comp R -Handbuch.

**FR** Si vous souhaitez voir ce manuel dans une autre langue, rendez-vous sur le site [www.trekbikes.com/support](http://www.trekbikes.com/support) et recherchez le manuel Commuter Comp R sur la page Manuels et guides de l'utilisateur.

**ES** Si desea ver este manual en otro idioma, visite [www.trekbikes.com/support](http://www.trekbikes.com/support) y busque el manual de Commuter Comp R en la página Manuales y guías del usuario.

**IT** If you wish to see these manuals in another language, please visit [www.trekbikes.com/support](http://www.trekbikes.com/support) and look for the Commuter Comp R and Flare R City manual on the Manuals and user guides page.

**PL** Jeśli chcesz zobaczyć tę instrukcję w innym języku, odwiedź stronę [www.trekbikes.com/support](http://www.trekbikes.com/support) i poszukaj instrukcji Commuter Comp R na stronie Podręczniki i instrukcje obsługi.

**PT** Se você deseja ver este manual em outro idioma, visite [www.trekbikes.com/support](http://www.trekbikes.com/support) e procure o manual Commuter Comp R na página Manuais e guias do usuário.

**NL** Als u deze handleiding in een andere taal wilt bekijken, gaat u naar [www.trekbikes.com/support](http://www.trekbikes.com/support) en zoekt u naar de Commuter Comp R -handleiding op de pagina Handleidingen en gebruikershandleidingen.

**SL** If you wish to see these manuals in another language, please visit [www.trekbikes.com/support](http://www.trekbikes.com/support) and look for the Commuter Comp R and Flare R City manual on the Manuals and user guides page.

**JA** このマニュアルを別の言語で表示したい場合は、[www.trekbikes.com/support](http://www.trekbikes.com/support)にアクセスし、マニュアルおよびユーザーガイドページのCommuter Comp R マニュアルを参照してください。

**KO** 이 매뉴얼을 다른 언어로보고 싶다면 [www.trekbikes.com/support](http://www.trekbikes.com/support)를 방문하여 매뉴얼 및 사용자 가이드 페이지에서 Commuter Comp R 매뉴얼을 찾으십시오.

**ZH** 如果您希望以其他语言查看本手册,请访问[www.trekbikes.com/support](http://www.trekbikes.com/support),并在手册和用户指南页面上查找Commuter Comp R 手册。