

TREK



2022 ROSCOE 7, 8, 9

SERVICE MANUAL SUPPLEMENT

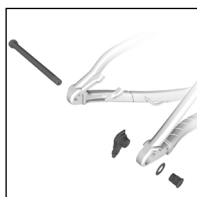
Contents



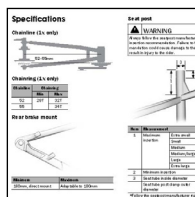
[Safety](#)



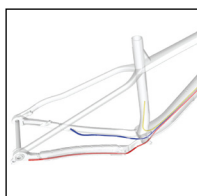
[Frame guards](#)



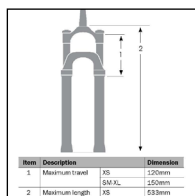
[Dérailleur hanger](#)



[Specifications](#)



[Cabling](#)



[Suspension](#)

Safety



WARNING

Tighten hardware properly

Always tighten hardware to the specified torque. Over-tightening hardware could deform or break the hardware or components. Under-tightening hardware could cause hardware or components to become loose. Either situation could damage the bicycle and result in injury to the rider.



WARNING

Re-apply threadlocker

All reused-fasteners with a pre-applied threadlocker must be cleaned with isopropyl alcohol and have new threadlocker applied before re-assembly. If a threadlocker is not applied, the fasteners may loosen, which could damage the bicycle and result in injury to the rider.

Legend



Apply grease



Do not apply grease



Apply threadlocker

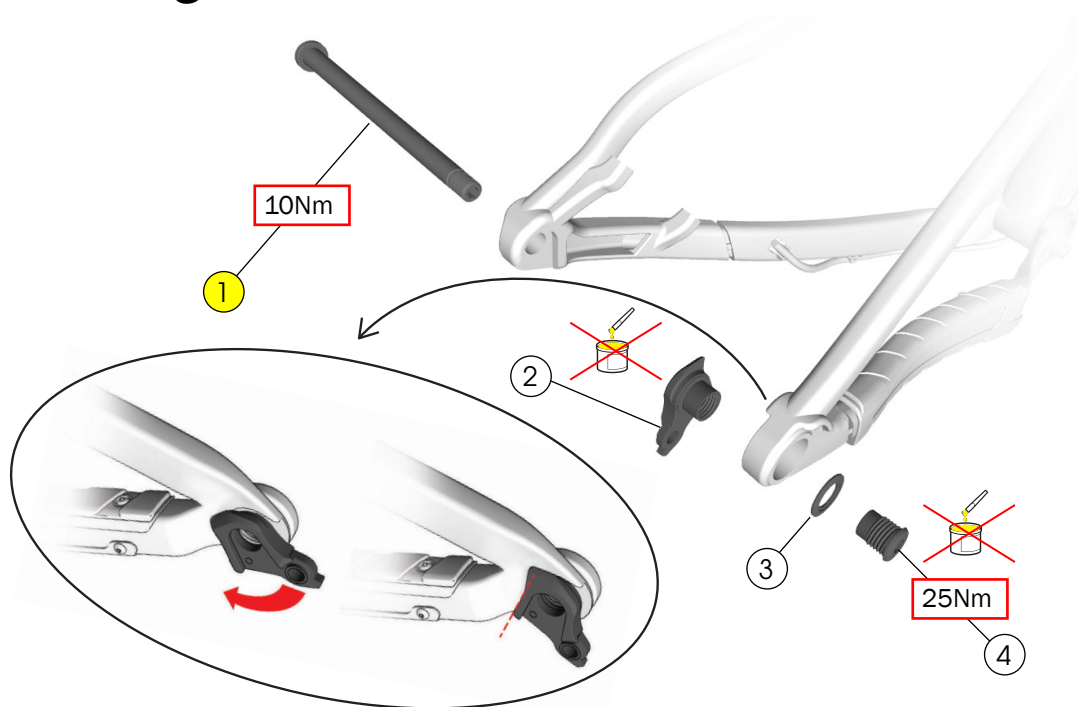
Nm

Torque



Zip tie

Derailleur hanger



- ① Thru axle — W600321
 - ② Derailleur Hanger
 - ③ Washer
 - ④ Bolt
- W600660

Tools

- 8 mm hex tool
- Torque wrench (left-hand thread) with 8 mm hex bit



WARNING

Do not apply grease to the derailleur hanger or bolt. Only apply grease to the thru axle.

This bicycle frame is designed to use a Universal Derailleur Hanger (UDH).

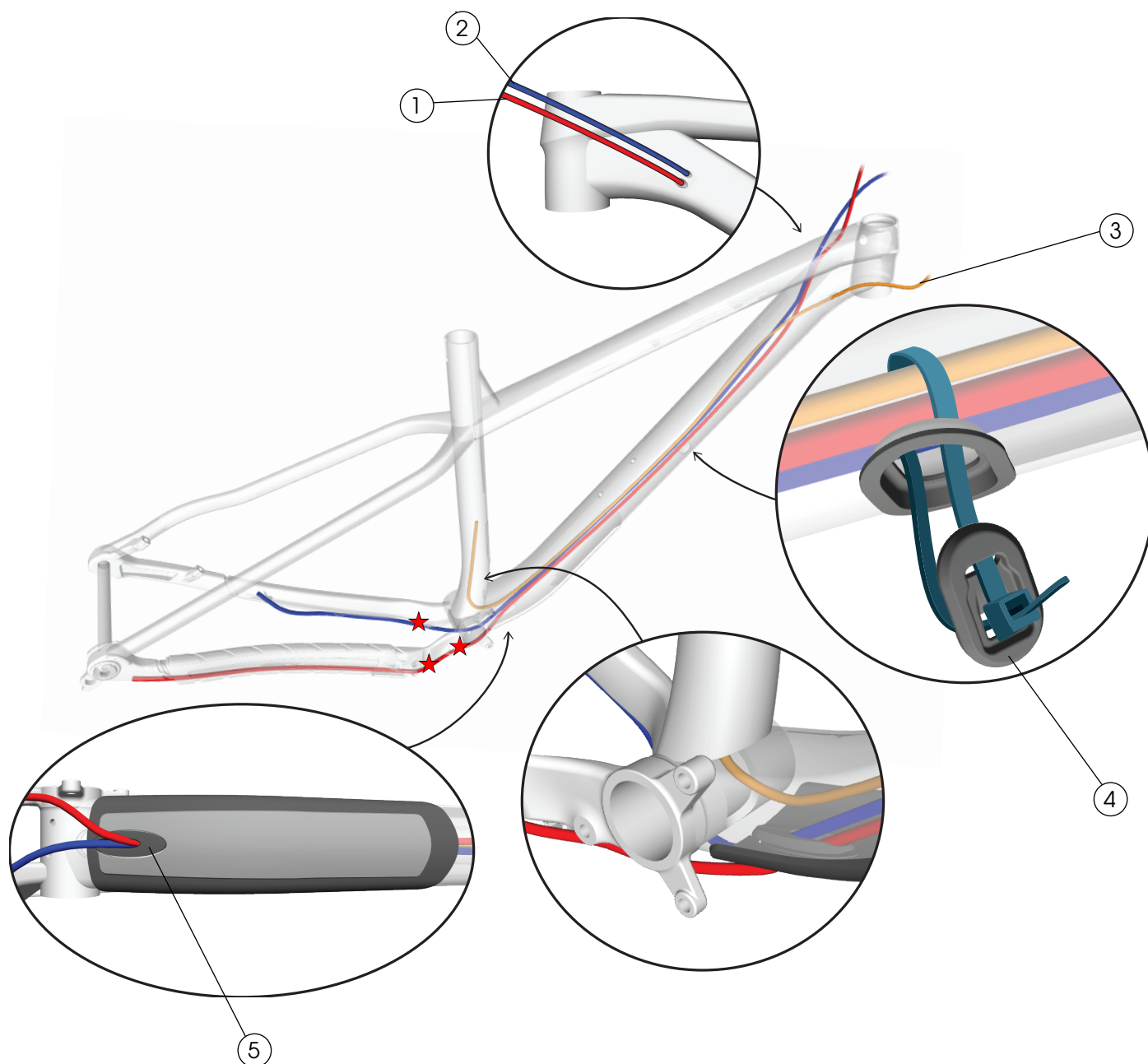
NOTICE: The thru axle must be compatible with a UDH and must be M12x1.0 with a 12.7 mm thread.

NOTICE: The washer is frame-specific. Install only the washer compatible with your frame.

NOTICE: Do not over-tighten. Over-tightening the bolt could cause the hanger to break.

For additional information about the UDH, refer to the SRAM user manual at www.sram.com.

Cabling



- ① Derailleur cable
- ② Rear brake hose
- ③ Dropper post cable
- ④ Zip tie guide for internal routing — W513977
- ⑤ Plug cable guide — W5253075
- ★ Zip tie

Zip tie guide

Tips:

- Before inserting the zip tie, bend it in half to create a crease. This will make it easier to wrap the zip tie around the cables and out through the hole.
- Use a hook tool and a pick tool to hold the cables and guide the zip tie around them.

Frame guards



① Chainstay guard — W5252847

② Downtube guard — W5253074

★ Zip tie

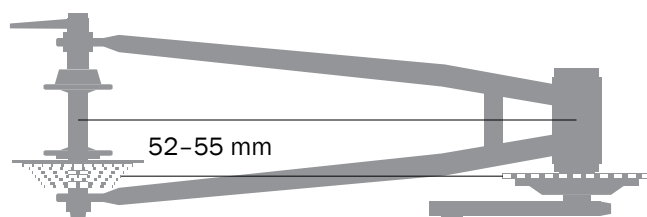
Downtube guard

Use isopropyl alcohol to clean the frame surface where the guard (2) attaches. Wait for the alcohol to dry before applying the guard.

Notice: Do not clean the entire frame with isopropyl alcohol. Isopropyl alcohol could damage the paint.

Specifications

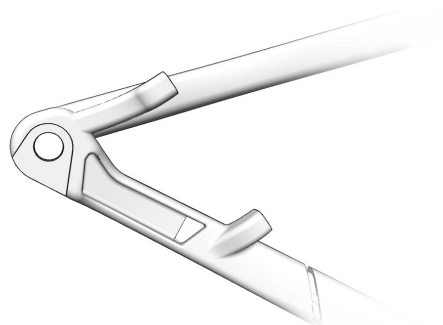
Chainline (1x only)



Chainring (1x only)

Chainline	Chainring	
	Min	Max
52	28T	32T
55		34T

Rear brake mount



Minimum	Maximum
160 mm, direct mount	Adaptable to 180 mm

Maximum tyre size

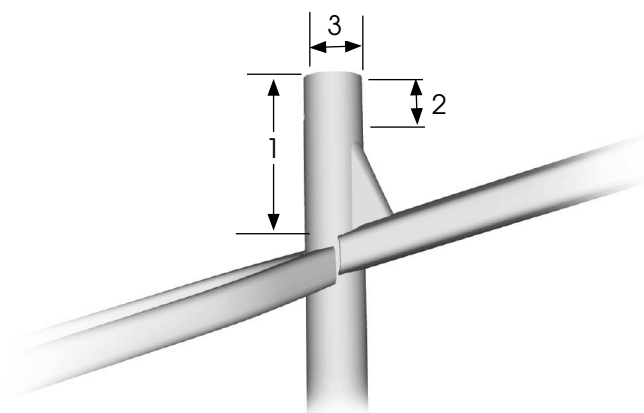
Notice: Measurements of actual tyres may vary. Always verify there is sufficient clearance between the tyre and the frame. Improper tyre size could damage the bicycle frame. Trek recommends 6 mm clearance above and on the sides of the tyre.

Wheel set	Maximum tyre size
29"	29.0" x 2.60"
27.5"	27.5" x 2.60"

Seat post

WARNING

Always follow the seat post manufacturer's minimum insertion recommendation. Failure to follow the recommendation could cause damage to the seatpost and result in injury to the rider.



Item	Measurement		
1	Maximum insertion	Extra small	190 mm
		Small	200 mm
		Medium	240 mm
		Medium/large	
		Large	250 mm
		Extra large	
2	Minimum insertion		75 mm*
3	Seat tube inside diameter		31.6 mm
	Seat tube post clamp outer diameter		36.2 mm

*Follow the seatpost manufacturer guidelines.

Bottom bracket/ISCG tabs



Bottom Bracket	ISCG Tabs
BSA73	ISCG 05

Suspension

The first step in suspension setup is to determine the sag. All other settings should be adjusted after determining the sag.

Refer to the suspension setup card included with your bike or the suspension calculator at

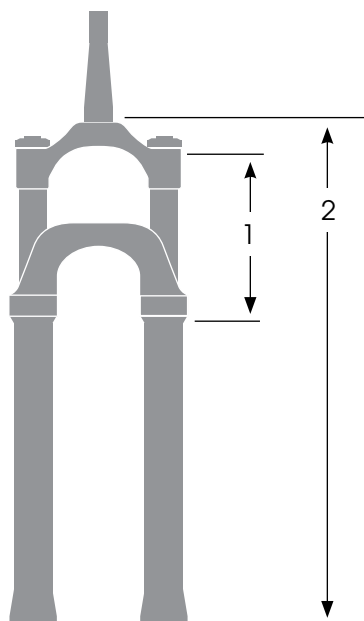
[Trekbikes.com/suspension-calculator](https://trekbikes.com/suspension-calculator).

Fork



WARNING

Exceeding the recommended maximum fork length could damage the bicycle and result in injury to the rider.



Item	Description		Dimension
1	Maximum travel	XS	120 mm
		SM-XL	150 mm
2	Maximum length	XS	533 mm
		SM-XL	563 mm