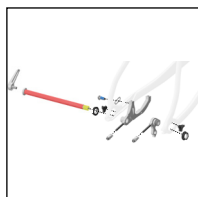


TREK

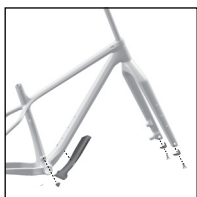


2023 Farley
Carbon 9.6
SERVICE MANUAL

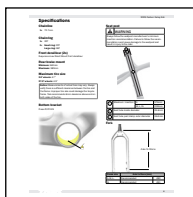
Contents



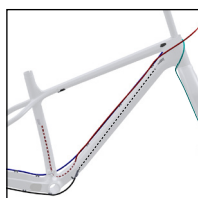
[Front and rear dropouts](#)



[Frame guards](#)



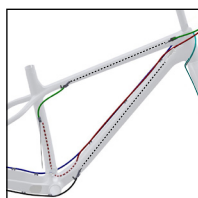
[Specifications](#)



[Routing — 1x](#)



[Fork and frame mounts](#)



[Routing — Optional 2x](#)



[Front rack
\(Available separately\)](#)

Safety



WARNING

Tighten hardware properly

Always tighten hardware to the specified torque. Over-tightening hardware could deform or break the hardware or components. Under-tightening hardware could cause hardware or components to become loose. Either situation could damage the bicycle and result in injury to the rider.



WARNING

Re-apply threadlocker

All reused-fasteners with a pre-applied threadlocker must be cleaned with isopropyl alcohol and have new threadlocker applied before re-assembly. If a threadlocker is not applied, the fasteners may loosen, which could damage the bicycle and result in injury to the rider.

Legend



Apply grease



Do not apply grease



Apply threadlocker



Nm

Torque



Hex tool



Torx tool



Drift tool

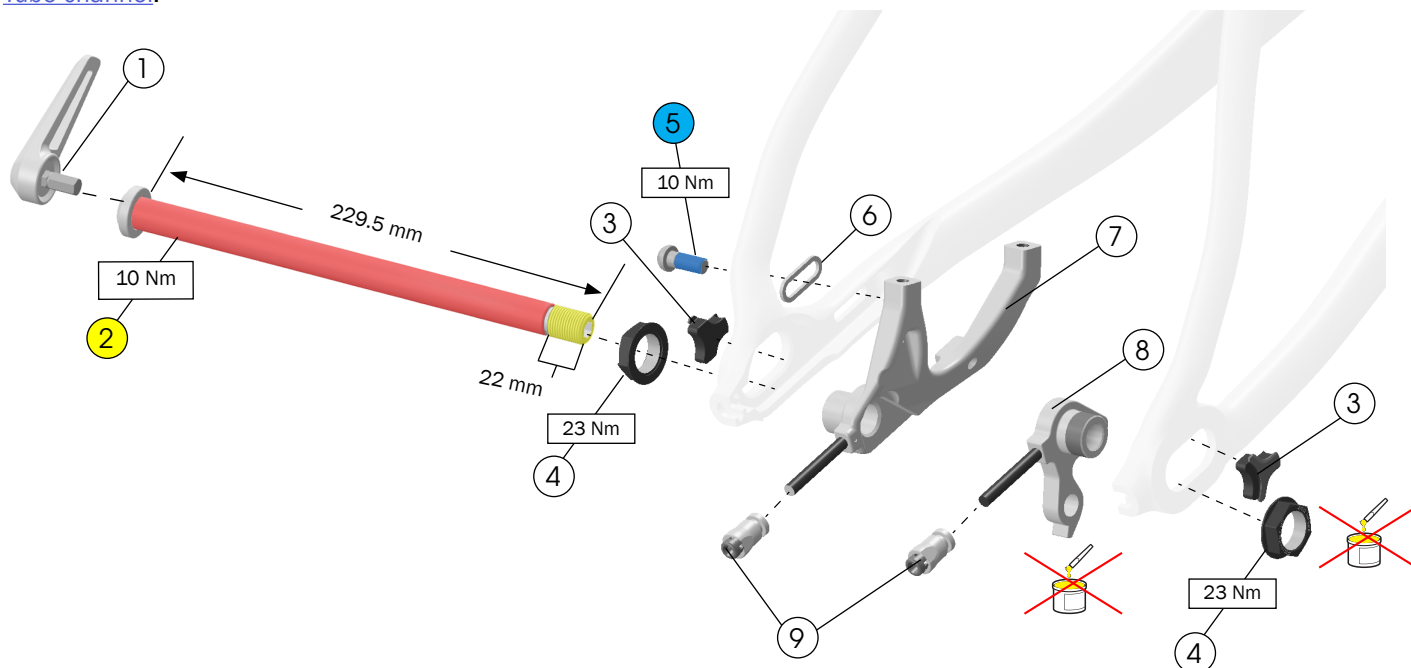


Zip tie

Front and rear dropouts

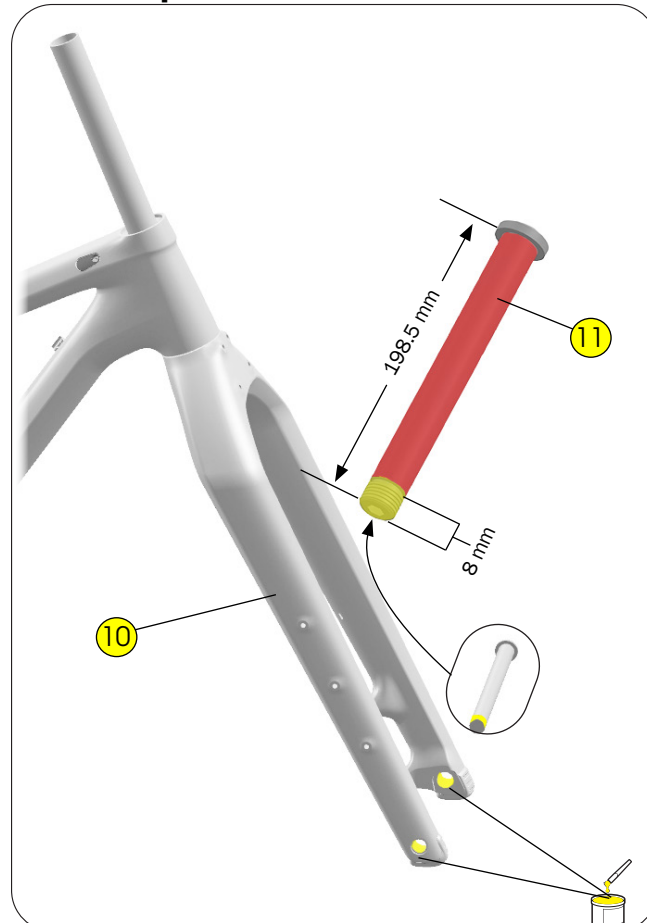
Sliding rear dropout

For information about adjusting the sliding dropout, watch the video [How to: Adjust Horizontal Sliding Dropouts on Trek's YouTube channel](#).

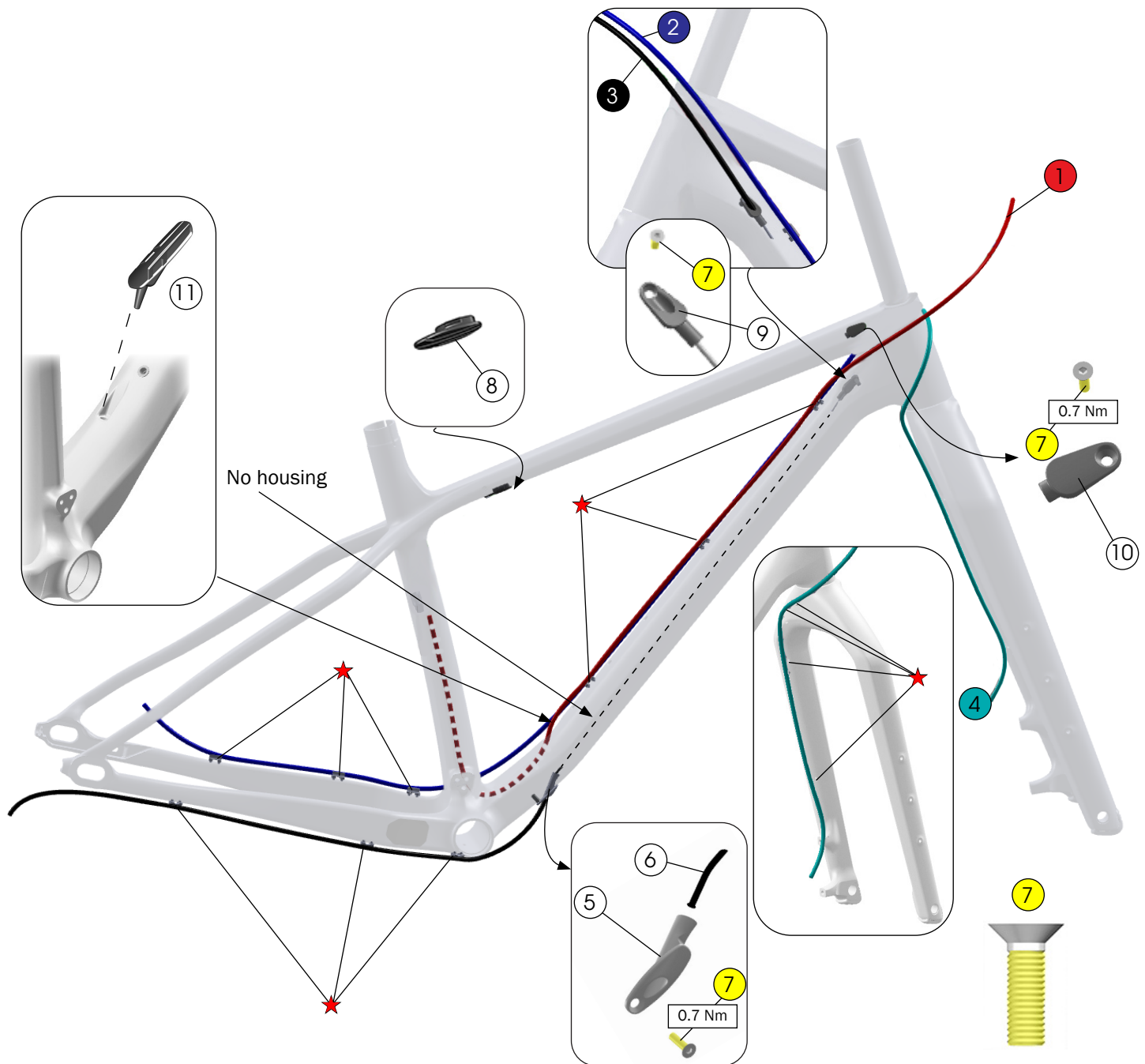


- ① Switch lever — [W573860](#)
- ② Rear thru-axle, 12 x 229 mm — [W565795](#)
- ③ Dropout inserts are original equipment only. No replacement part available. Dropout inserts move the rear axle backwards to create proper tyre clearance. If not using the dropout inserts, ensure that the sliding dropout hardware ④ is positioned to create proper tyre clearance.
- ④ Closed convert hardtail and horizontal sliding dropout hardware, M12 x 1 mm — [W318004](#)
- ⑤ Bolt, M6 x 16 mm
- ⑥ Washer, stainless steel — [517009](#)
- ⑦ Non-driveside dropout
- ⑧ Driveside slider with derailleur hanger — [W504671](#)
- ⑨ Slider retention nuts
- ⑩ Carbon fork — [5311796](#)
- ⑪ Front thru axle, 15 x 198.5 mm — [W565810](#)

Front dropout



Routing — 1x



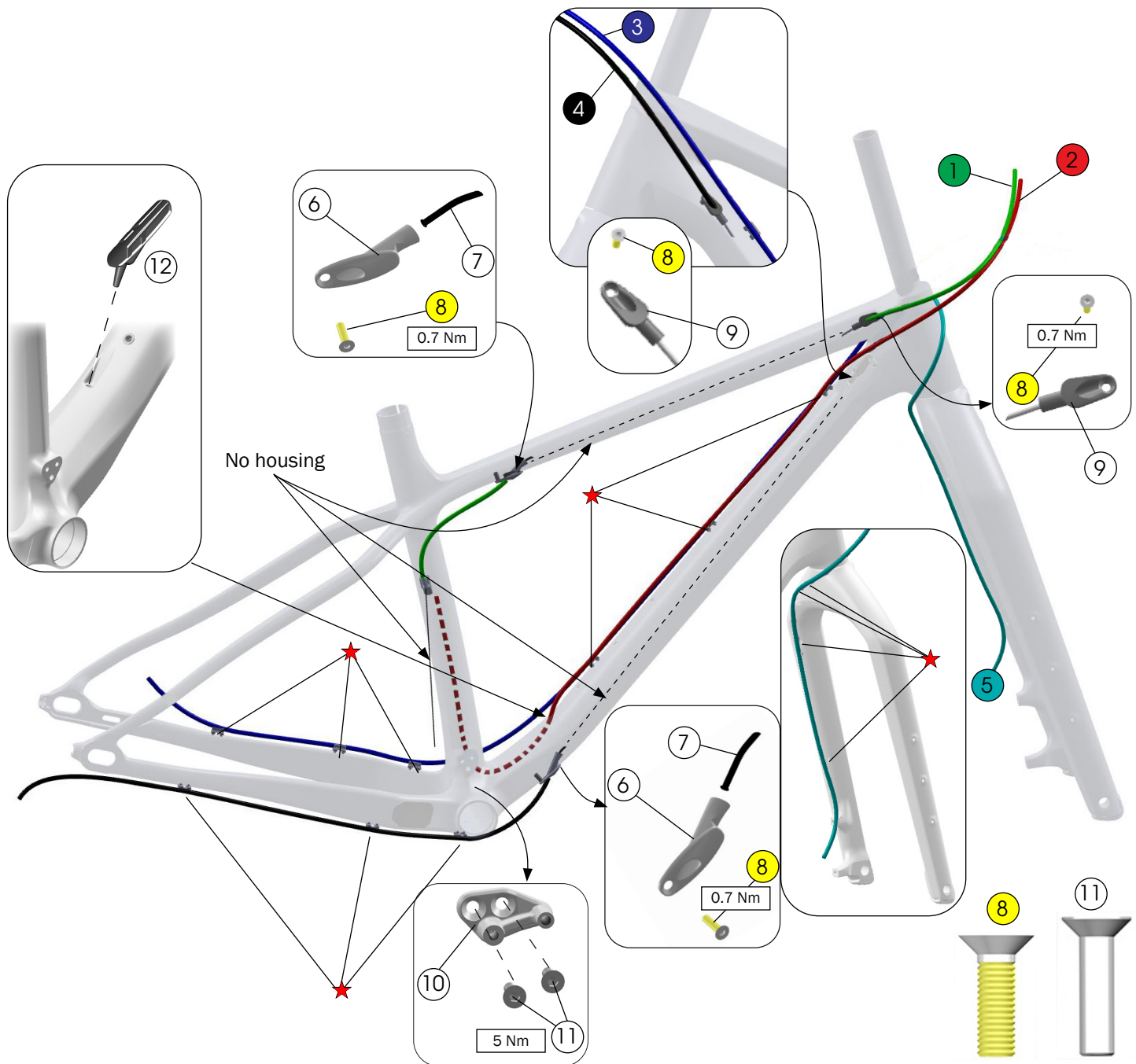
- 1** Dropper post housing
- 2** Rear brake hose
- 3** Rear derailleur housing
- 4** Front brake hose.
- ★ Zip ties

- 5** Cable exit guide
- 6** Guide tube — [W333080](#)

— [W439610](#)

- 7** Fasteners, M3 x 12 mm — [W318529](#)
Note: Apply anti-seize or waterproof grease.
- 8** Frame plug — [W329840](#)
- 9** Cable entry guide — [W315463](#)
- 10** Cable stop frame plug — [W318628](#)
- 11** Dropper post carbon frame plug
(For use with a rigid seat post) — [W321530](#)

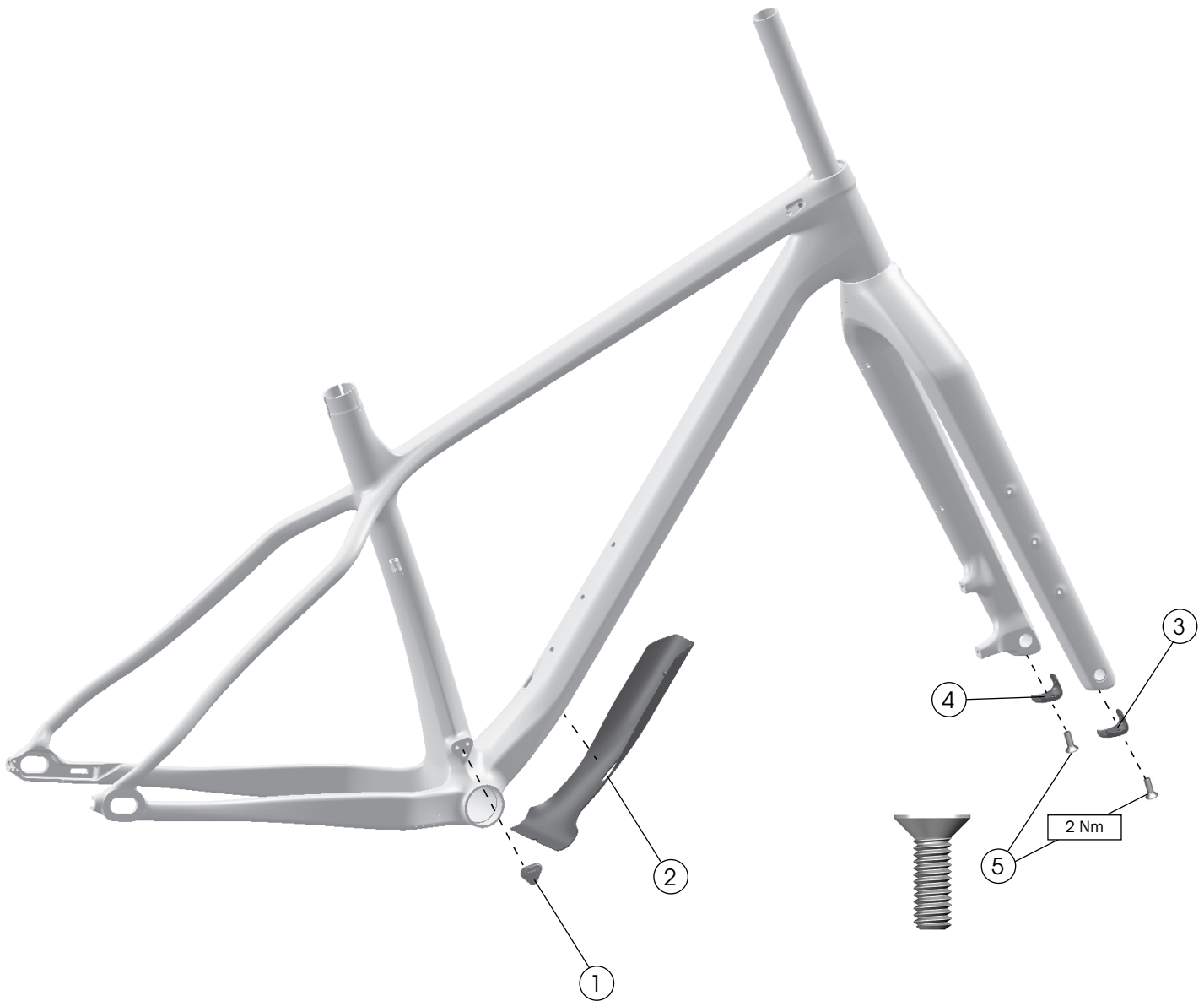
Routing — Optional 2x



- ① Front derailleur housing
- ② Dropper post housing
- ③ Rear brake hose
- ④ Rear derailleur housing
- ⑤ Front brake hose.
- ★ Zip ties

- ⑥ Cable exit guides
- ⑦ Guide tubes — [W333080](#)
- ⑧ Fasteners, M3 x 12 mm — [W318529](#)
- Note:** Apply anti-seize or waterproof grease.
- ⑨ Cable entry guides — [W315463](#)
- ⑩ Low, direct-mount front derailleur bracket — [W516589](#)
- ⑪ Bolts, M5 x 16 — [W522730](#)
- ⑫ Dropper post carbon frame plug
(For use with a rigid seat post) — [W321530](#)

Frame guards

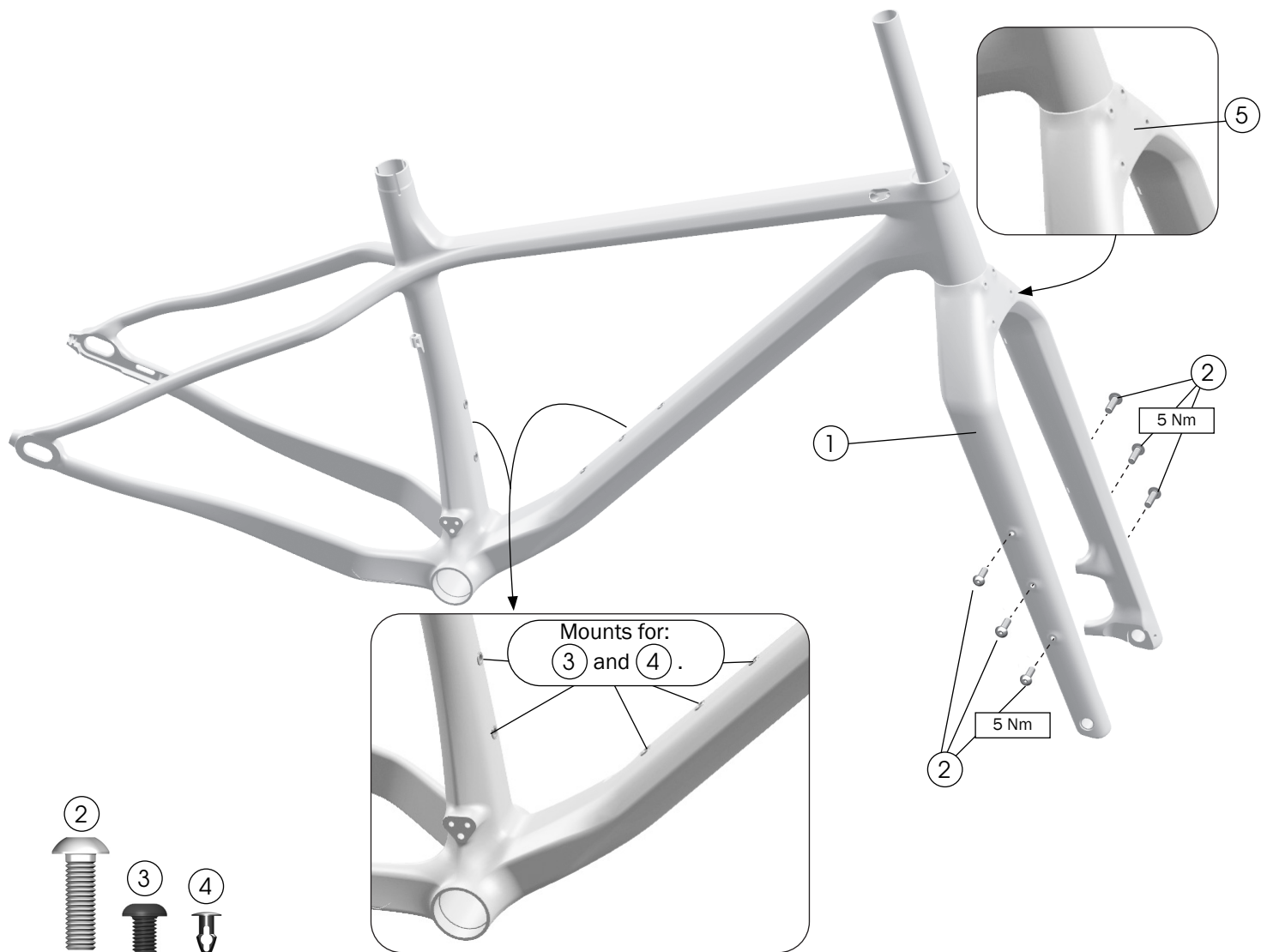


- ① Low, direct-mount front derailleur plate cover — [W516639](#)
- ② Downtube adhesive guard — [W519509](#)
Use isopropyl alcohol to clean the frame surface where the guard is attached. Wait for the alcohol to dry before applying the guard.

Notice: Do not clean the entire frame with isopropyl alcohol. Isopropyl alcohol could damage the paint.

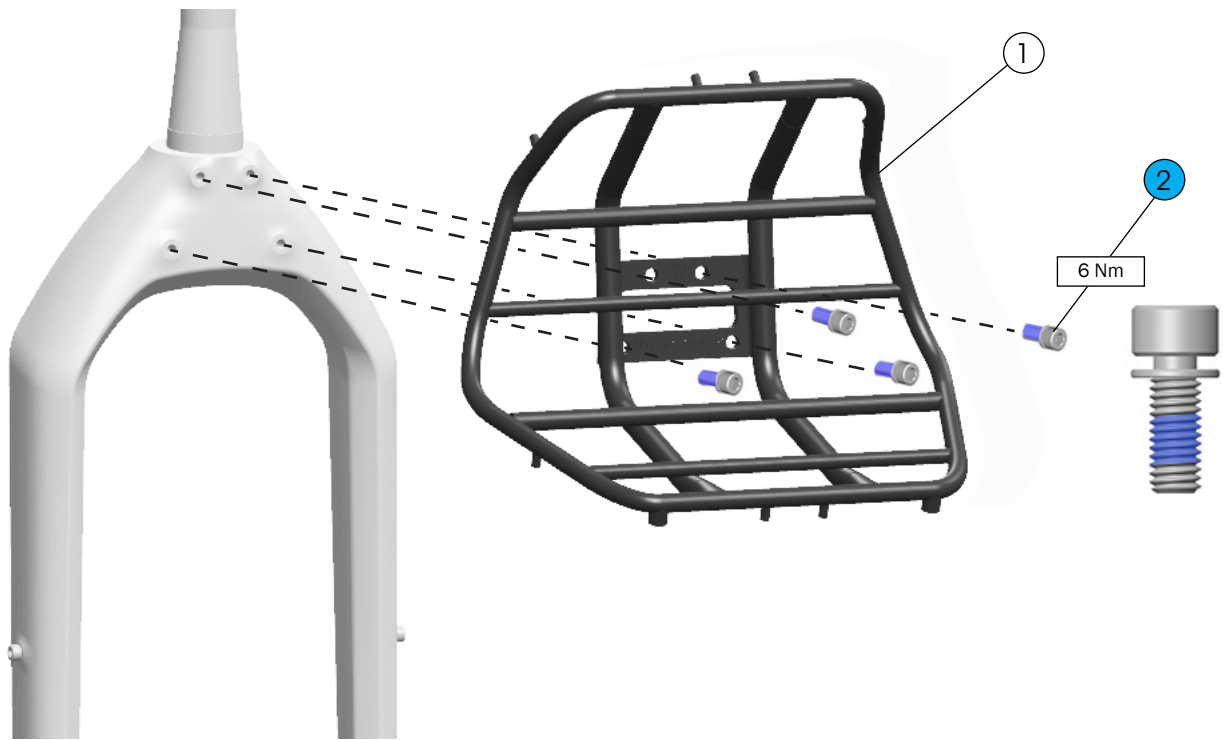
- ③ Fork dropout bumper, driveside
 - ④ Fork dropout bumper, non-driveside
 - ⑤ Bolts, M4 x 12 mm
- [5312674](#)

Fork and frame mounts



- ① Carbon fork — [5311796](#)
- ② Screws, stainless steel, M5 x 16 mm — [W5252789](#)
- ③ Water bottle bolts, stainless steel, M5 x 0.8 mm — [W598484](#)
- ④ Water bottle nutsert plugs — [W308963](#)
- ⑤ Mounts for M6 x 16 mm bolts. See [Front rack on page 7.](#)

Front rack (available separately)



- ① Farley front rack — [44354](#)
Search trekbikes.com to find the colour-matched part for your bike.
- ② Bolts, M6 x 16 mm, with washers — [W582658](#)

Specifications

Chain line

1x 70.7 mm

Chain ring

1x 32T

2x **Small ring:** 22T

Large ring: 36T

Front derailleur (2x)

Requires a Low Direct Mount front derailleur

Rear brake mount

Minimum: 160 mm

Maximum: 180 mm

Maximum tyre size

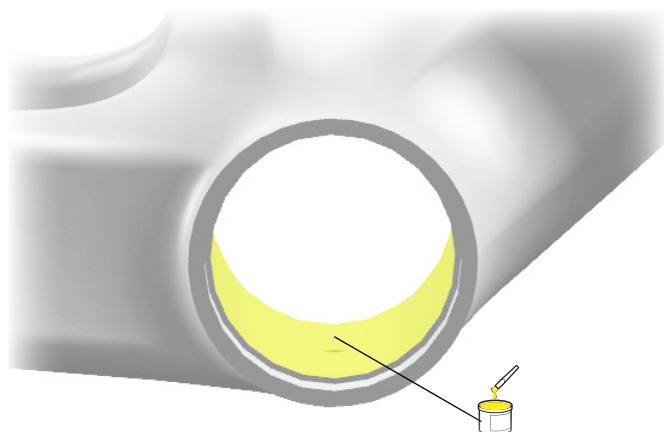
26" wheels: 4.7"

27.5" wheels: 4.5"

Notice: Measurements of actual tyres may vary. Always verify that there is sufficient clearance between the tyre and the frame. Improper tyre size could damage the bicycle frame. Trek recommends 6mm clearance above and on both sides of the tyre.

Bottom bracket

Press fit PF121

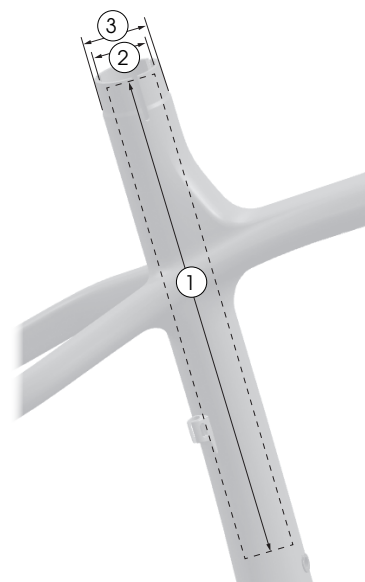


Seat post



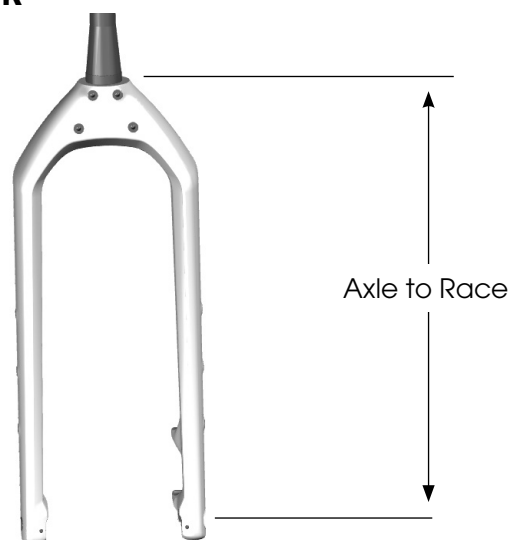
WARNING

Always follow the seat post manufacturer's minimum insertion recommendation. Failure to follow the recommendation could cause damage to the seat post and result in injury to the rider.



①	Maximum insertion	S	175 mm
		M, L, XL	200 mm
②	Seat tube inside diameter		31.6 mm
③	Seat tube post clamp outer diameter		36.4 mm

Fork



Frame size	Axle to Race (mm)	
S, M, L,	Recommended	490
XL	Recommended	491