



Quick Assembly Guide
Kids' Bikes

TREK

! **IMPORTANT:** This assembly guide is not a replacement for the Trek Owner's Manual or other instructions required for your bicycle. The owner's manual comes in the box and can also be found at trekbikes.com/manuals.

▶ Watch the assembly video here:
trek.bike/build_a_bike > Kids' bikes



⚠ **WARNING:** You add to the risk of injury if you use your bicycle in an incorrect manner. Misuse can add stress to the bike and cause wear on the frame or components. To decrease the risk of injury, you should use the bicycle in the manner for which it was designed.

This is gonna be awesome

Congrats on your new ride! Ready to build 'er up? Whether you're a first-time bike builder, an experienced torque-wrencher, or somewhere in between, this Assembly Guide will talk you through every step of the process.

Before you get started, take a look at the included parts section to make sure everything's there, give each step a quick read-through, and watch the assembly video. Then, roll up your sleeves, take a deep breath, and start with step one. You got this!

If you need a little extra support while you're building, we've got you covered. Just give us a call or visit your local Trek retailer. You and your kiddo will be ready to roll together in no time.



Included

- 1 Preset torque wrench
- 2 Pedal wrench
- 3 Pedals
- 4 Bicycle owner's manual
- 5 1oz grease packet
- 6 Training wheels (may not be included)
- 7 Crayons

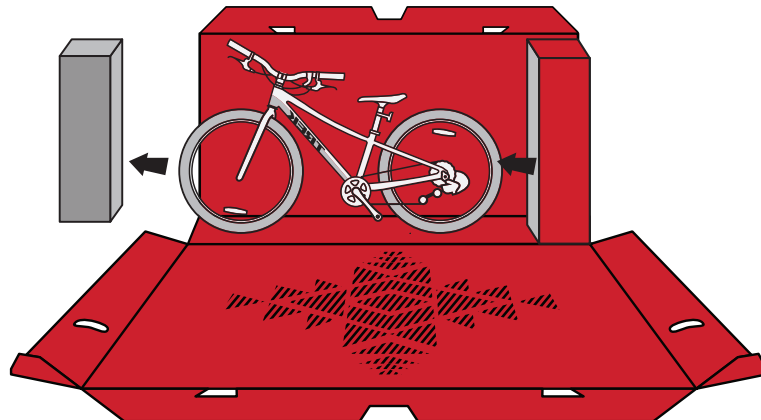
Not included



Air pump

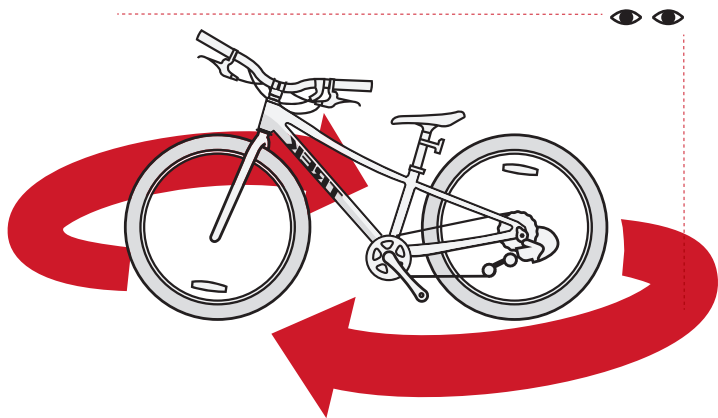


Remove all packaging from the bike and slide the bike out of the box.



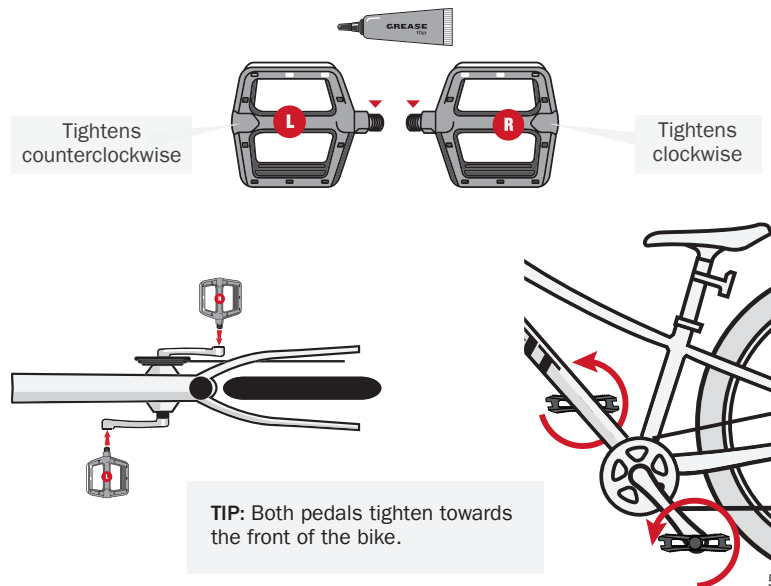
2

Check the bike for shipping damage and make sure all parts are included.

**3**

Install the pedals.

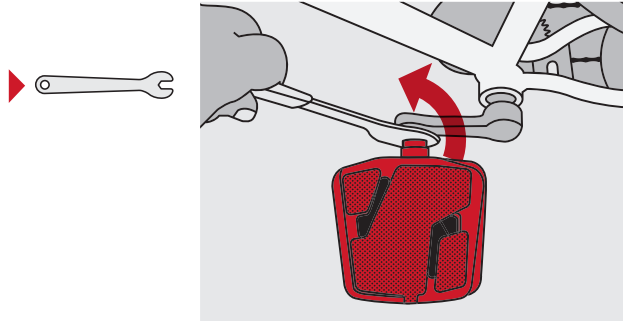
1. Lubricate the pedal threads with 1-2 drops of the grease provided.
2. Hand tighten the pedals onto the crank arms. Make sure you tighten the nut and not the pedal itself.



4

Fully tighten the pedals with the pedal wrench.

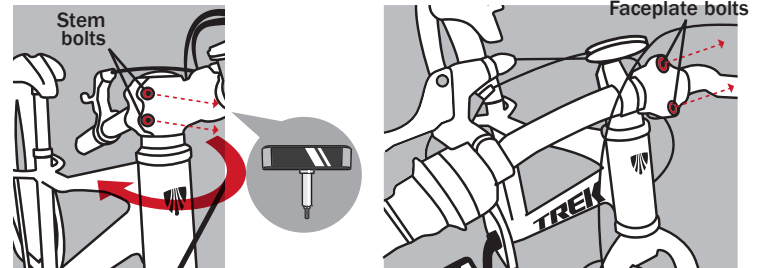
⚠ WARNING: The chainring has sharp points. Be careful when working around the chainring. Failure to do so may result in cut or pinched skin.



5

Rotate the handlebar.

1. Loosen the two stem bolts on the right side of the stem.
2. Hold the front wheel between your knees and rotate the stem to align it perpendicular to the front wheel (the brake and/or the Trek log must face forward).
3. Use the torque wrench to tighten both stem bolts until you feel the tool click.
4. Loosen the two faceplate bolts a few turns.

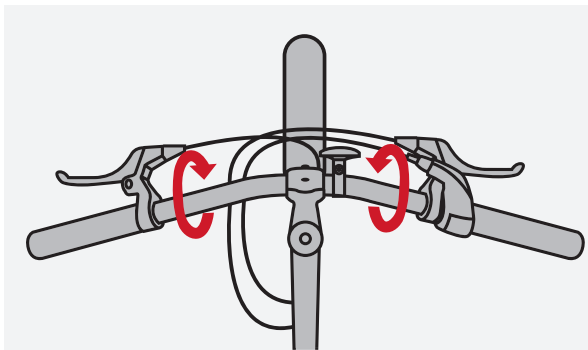


5**Rotate the handlebar (continued).**

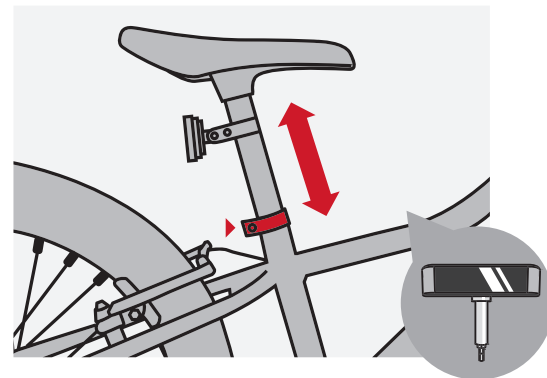
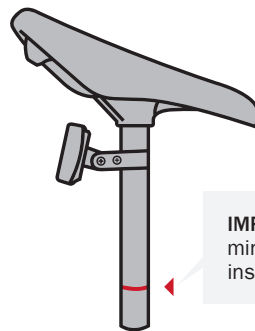
5. Rotate the handlebar towards the front of the bike so the brake levers are about 45° to the handlebar.
6. Use the torque wrench to tighten the two faceplate bolts — alternating between them a few turns at a time — until you feel the tool click.



IMPORTANT: There should be an equal gap between the top and bottom of the stem and faceplate.

**6****Adjust the seat.**

1. Loosen the seatpost collar bolt.
2. Raise or lower the seat to a comfortable riding height.
3. Use the torque wrench to tighten the seatpost collar bolt until you feel the tool click.

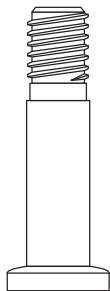
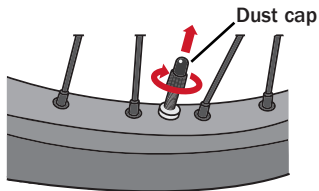


IMPORTANT: Make sure the minimum insertion line is inside the seat tube.

7

Inflate both tires.

1. Remove the dust cap.
2. Inflate both tires to within the range listed on the tire.
3. Put the dust cap back on the valve.



BICYCLE ASSEMBLY CHECKLIST

After you assemble your bike, complete this checklist:

- Handlebar and stem properly aligned? (Steps 5-6)
- Faceplate and stem bolts properly tightened? (Step 6)
- Pedals installed correctly and tightened? (Steps 4-5)
- Seat height correct and seatpost collar bolt tightened? (Step 7)
- Tires inflated to correct pressure? (Step 8)
- Register your bicycle?
- Perform a pre-ride check?



Register your bike at
[trekbikes.com/
ProductRegistration](https://trekbikes.com/ProductRegistration)



Watch the Pre-Ride
Check video at:
[youtube.com/user/
trebikesusa](https://youtube.com/user/trebikesusa)

**RIDE BIKES
HAVE FUN
FEEL GOOD**

For information about your bike's warranty, please see
trekbikes.com/inside_trek/warrantied_for_life



If you have questions, please contact your local Trek bike
shop, call Trek Customer Care at 800-585-8735 from
9am – 5:30pm Monday – Friday CST, or chat with us at
trekbikes.com/contactus



**CERTIFIED AWESOME
BY TREK**

PN 5317404